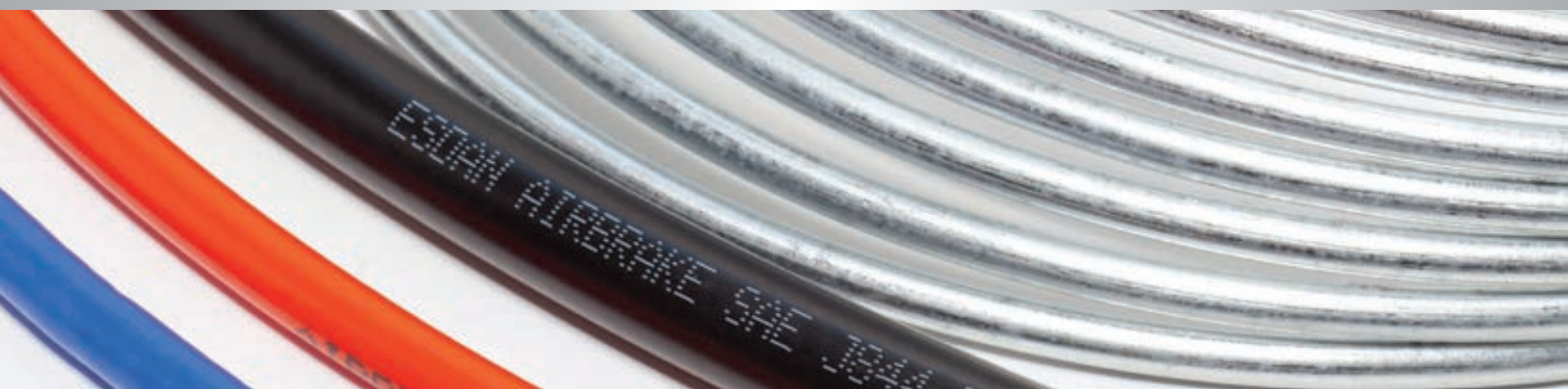


A close-up photograph showing a variety of industrial pipe fittings. The fittings are made of brass and stainless steel and include different types such as elbows, tees, and unions. They are arranged on a plain white background.



PRODUCT BRANDS

conecta

CONECTA – Industrial Brass Fittings, Flare Fittings, Compression Fittings, Pipe Fittings, Airline Fittings, Needle Valves & Drain Cocks

BONDLOC
FORMULAS THAT WORK

BONDLOC – Adhesives & Sealants

T.A.C.

TAC – Push to Connect Airbrake Fittings D.O.T

API ADVANCED
PNEUMATIC
INDUSTRIES

API – Nickel Plated Pneumatic Push In Air Fittings and Silencers

CDC

CDC – Pneumatic One-Touch Push In Air Fittings, Check Valves and Banjo Flow Controllers

Fluidfit

FLUIDFIT – Fittings for Potable Water, Drink Dispensers and Beverages

Fairview

FAIRVIEW – NTA Airbrake Fittings D.O.T, NPT Pipe Fittings, Rubber Airbrake Hose Ends D.O.T, Road Ranger Fittings, Rubber Airbrake Hose J1402, Steel Bundy Tubing, Copper Tubing, Stainless Steel Pipe Retaining Clips

ARO

ARO – Air Fittings, Couplers & Adaptors

BREEZE

BREEZE – Stainless Steel Hose Clips & Clamps

FLOMAX

FLOMAX – Ball Valves, Lever Handle Ball Valves, Tee Handle Ball Valves, Miniature Ball Valves & Gate Valves

Esdan Plastics

ESDAN PLASTICS – Nylon Airbrake Tubing, Nylon 12 Tubing, Suzi Coils & PVC Hoses, Spiral Tie

POWAFLEX

POWAFLEX – Rubber & PVC Hoses

GasTight – GCA®

GAS TIGHT-GCA – AGA Approved Ball Valves

CONTENTS

INDUSTRIAL BRASS FITTINGS

Airline Fittings	2
Pipe Fittings	4
Compression Fittings	7
Flare Fittings	10

AIRBRAKE & NPT PIPE FITTINGS

NTA Airbrake Fittings D.O.T Approved	14
Push to Connect Airbrake Fittings D.O.T Approved	16
Pipe Fittings NPT & Metric	19
Road Ranger Fittings	20
Re-Usable Rubber Airbrake Hose Ends D.O.T Approved..	20

PNEUMATIC FITTINGS

Pneumatic Fittings Imperial & Metric	22
--	----

FLUIDFIT FITTINGS

FluidFit Fittings Imperial & Metric	28
---	----

ARO FITTINGS

ARO Couplers	32
A210 ARO Coupler Adaptors	32
A380 ARO Coupler Adaptors	32
A400 ARO Coupler Adaptors	32

TAPS & VALVES

Lever Handle Ball Valves.....	34
Tee Handle Ball Valves	34
Miniature Ball Valves	35
Gates Valves.....	35
Needle Valves.....	35
Drain Cocks	35
Check Valves.....	36
Gas Approved Ball Valves	36
Brass Lever Taps	36

HOSE CLIPS & CLAMPS

Breeze Miniature Hose Clamps.....	38
Breeze Power Seal Hose Clamps	38
Oetiker Clips	38
Pipe Retaining Clips – Stainless Steel.....	38

TUBING & HOSE

Spiral Tie	40
Copper Tubing	40
Bundy Tubing	40
Rubber Airbrake Hose J1402	40
Nylon Airbrake Tubing	40
Rubber Fuel Hose	41
Heater Hose	41
PVC Airline Hose	41
Polyethylene Tubing	41
Suzi Coils	42

ERGONOMIC WASHDOWN GUN

RB65 Ergonomic Washdown Gun.....	44
----------------------------------	----

BONDLOC RANGE

Anaerobic Range	46
Cyanoacrylate Range.....	47
Sealant Range.....	47
Structural Range	47
Maintenance Product.....	48

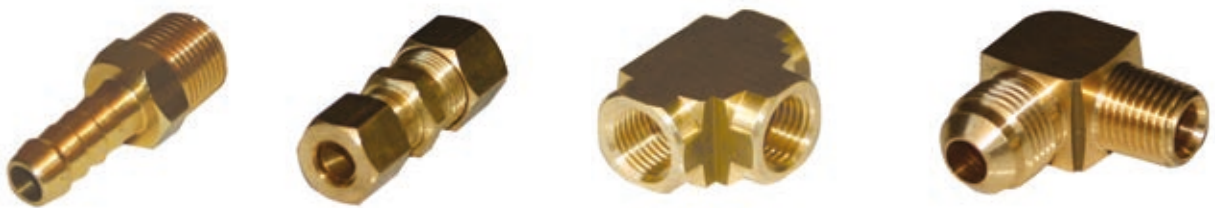
MISCELLANEOUS

Threadseal Tape	50
Nylon Tube Cutter	50
Air Duster Gun	50
25 Drawer Cabinet	50
Cable Ties	50

CONVERSION TABLES & PROFILES

Conversions	51
Profiles	52

INDUSTRIAL BRASS FITTINGS



AIRLINE FITTINGS



AIRLINE FITTINGS are manufactured using a special beaded barb design to provide an unparalleled security against the hose pulling off the barb. These fittings are available in sizes ranging from 3/16 to 1”.

ADVANTAGES Almost impossible to pull hose off. The 6 degree barb give exceptional sealing properties, while the end bead provides a shoulder preventing any longitudinal movement of the hose. For added integrity two hose clips may be used.

APPLICATIONS Use with all rubber, plastic and other flexible hoses. Generally used where lower pressures (750kpa) are encountered, although with correct selection of hose and clamp, higher pressures can be accommodated.

WORKING PRESSURES Airline Fittings should be used where lower pressures exist (1000 kPa (145PSI maximum)).

ASSEMBLY

1. Slide clamp onto hose.
2. Push hose fully onto barb.
3. Position the clamp in the centre of the barb and tighten.

AIRLINE FITTINGS

SWIVEL CONNECTOR

Part No	Tube Size	Pipe Thread
2010404	1/4	1/4 BSPF
2010406	1/4	3/8 BSPF
2010504	5/16	1/4 BSPF
2010506	5/16	3/8 BSPF
2010508	5/16	1/2 BSPF
2010604	3/8	1/4 BSPF
2010606	3/8	3/8 BSPF
2010806	1/2	3/8 BSPF
2010808	1/2	1/2 BSPF



MALE BRANCH TEE

Part No	Tube Size	Pipe Thread
2060402	1/4	1/8 BSPT
2060404	1/4	1/4 BSPT
2060504	5/16	1/4 BSPT
2060604	3/8	1/4 BSPT
2060606	3/8	3/8 BSPT
2060806	1/2	3/8 BSPT
2060808	1/2	1/2 BSPT



MALE ELBOW

Part No	Tube Size	Pipe Thread
2020302	3/16	1/8 BSPT
2020402	1/4	1/8 BSPT
2020404	1/4	1/4 BSPT
2020502	5/16	1/8 BSPT
2020504	5/16	1/4 BSPT
2020602	3/8	1/8 BSPT
2020604	3/8	1/4 BSPT
2020606	3/8	3/8 BSPT
2020804	1/2	1/4 BSPT
2020806	1/2	3/8 BSPT
2020808	1/2	1/2 BSPT
2021006	5/8	3/8 BSPT
2021008	5/8	1/2 BSPT
2021208	3/4	1/2 BSPT
2021212	3/4	3/4 BSPT

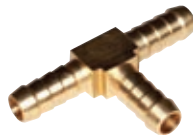


Part No	Tube Size	Pipe Thread
2070302	3/16	1/8 BSPP
2070402	1/4	1/8 BSPP
2070404	1/4	1/4 BSPP
2070406	1/4	3/8 BSPP
2070502	5/16	1/8 BSPP
2070504	5/16	1/4 BSPP
2070506	5/16	3/8 BSPP
2070602	3/8	1/8 BSPP
2070604	3/8	1/4 BSPP
2070606	3/8	3/8 BSPP
2070608	3/8	1/2 BSPP
2070804	1/2	1/4 BSPP
2070806	1/2	3/8 BSPP
2070808	1/2	1/2 BSPP
2071006	5/8	3/8 BSPP
2071008	5/8	1/2 BSPP
2071212	3/4	3/4 BSPP



UNION TEE

Part No	Tube Size	Pipe Thread
20303	3/16	-
20304	1/4	-
20305	5/16	-
20306	3/8	-
20308	1/2	-
20310	5/8	-
20312	3/4	-



UNION ELBOW

Part No	Tube Size	Pipe Thread
20404	1/4	-
20405	5/16	-
20406	3/8	-
20408	1/2	-



UNION JOINER

Part No	Tube Size	Pipe Thread
20503	3/16	-
20504	1/4	-
20505	5/16	-
20506	3/8	-
20508	1/2	-
20510	5/8	-
20512	3/4	-
20516	1"	-



MALE HOSE TAIL

Part No	Tube Size	Pipe Thread
2090302	3/16	1/8 BSPT
2090304	3/16	1/4 BSPT
2090402	1/4	1/8 BSPT
2090404	1/4	1/4 BSPT
2090406	1/4	3/8 BSPT
2090502	5/16	1/8 BSPT
2090504	5/16	1/4 BSPT
2090506	5/16	3/8 BSPT
2090508	5/16	1/2 BSPT
2090602	3/8	1/8 BSPT
2090604	3/8	1/4 BSPT
2090606	3/8	3/8 BSPT
2090608	3/8	1/2 BSPT
2090612	3/8	3/4 BSPT
2090802	1/2	1/8 BSPT
2090804	1/2	1/4 BSPT
2090806	1/2	3/8 BSPT
2090808	1/2	1/2 BSPT
2090812	1/2	3/4 BSPT
2091004	5/8	1/4 BSPT
2091006	5/8	3/8 BSPT
2091008	5/8	1/2 BSPT
2091012	5/8	3/4 BSPT
2091206	3/4	3/8 BSPT
2091208	3/4	1/2 BSPT
2091212	3/4	3/4 BSPT
2091216	3/4	1" BSPT
2091608	1"	1/2 BSPT
2091612	1"	3/4 BSPT
2091616	1"	1" BSPT



PIPE FITTINGS



PIPE FITTINGS are manufactured with female BSPP and male BSPT threads. These robust fittings are available in a comprehensive range of sizes ranging from 1/8" to 1".

ADVANTAGES Very easy to assemble with no special tools or extra parts being necessary. These fittings may be assembled and disassembled many times.

APPLICATIONS May be used with copper, steel or brass pipe. Install where medium to high pressures are encountered. Standard Pipe Fittings provide good resistance to vibration and are ideal for use in pneumatic and hydraulic control equipment.

WORKING PRESSURES Pipe Fittings are able to withstand high pressures, use the table below as a guide ONLY. Usually pressures are determined by the pipe used rather than the Pipe Fitting.

ASSEMBLY

1. Use a sealing compound. We recommend Bondloc B567 Pipe Sealant.
2. Tighten 1.5 to 2.5 turns past hand tight.

Thread Size	Hydraulic PSI	Pneumatic PSI
1/8	2000 PSI	500 PSI
1/4	2000 PSI	500 PSI
3/8	2000 PSI	400 PSI
1/2	1500 PSI	400 PSI
3/4	1020 PSI	290 PSI
1"	580 PSI	180 PSI

PIPE FITTINGS

CAP

Part No	Pipe Thread	Tube Size
313302	1/8 BSPP	-
313304	1/4 BSPP	-
313306	3/8 BSPP	-
313308	1/2 BSPP	-



HEX PLUG

Part No	Pipe Thread	Tube Size
315202	1/8 BSPT	-
315204	1/4 BSPT	-
315206	3/8 BSPT	-
315208	1/2 BSPT	-
315212	3/4 BSPT	-
315216	1" BSPT	-



MALE/FEMALE ADAPTOR

Part No	Pipe Thrd (F)	Pipe Thrd (M)
32000202	1/8 BSPP	1/8 BSPT
32000402	1/4 BSPP	1/8 BSPT
32000404	1/4 BSPP	1/4 BSPT
32000602	3/8 BSPP	1/8 BSPT
32000604	3/8 BSPP	1/4 BSPT
32000606	3/8 BSPP	3/8 BSPT
32000804	1/2 BSPP	1/4 BSPT
32000806	1/2 BSPP	3/8 BSPT
32000808	1/2 BSPP	1/2 BSPT
32001206	3/4 BSPP	3/8 BSPT
32001208	3/4 BSPP	1/2 BSPT



REDUCING BUSH

Part No	Pipe Thrd (M)	Pipe Thrd (F)
32240402	1/4 BSPT	1/8 BSPP
32240602	3/8 BSPT	1/8 BSPP
32240604	3/8 BSPT	1/4 BSPP
32240802	1/2 BSPT	1/8 BSPP
32240804	1/2 BSPT	1/4 BSPP
32240806	1/2 BSPT	3/8 BSPP
32241202	3/4 BSPT	1/8 BSPP
32241204	3/4 BSPT	1/4 BSPP
32241206	3/4 BSPT	3/8 BSPP
32241208	3/4 BSPT	1/2 BSPP
32241608	1" BSPT	1/2 BSPP
32241612	1" BSPT	3/4 BSPP



HEX SOCKET

Part No	Pipe Thread	Tube Size
330002	1/8 BSPP	-
330004	1/4 BSPP	-
330006	3/8 BSPP	-
330008	1/2 BSPP	-
330012	3/4 BSPP	-
330016	1" BSPP	-



REDUCING SOCKET

Part No	Pipe Thrd (F)	Pipe Thrd (F)
33040402	1/4 BSPP	1/8 BSPP
33040602	3/8 BSPP	1/8 BSPP
33040604	3/8 BSPP	1/4 BSPP
33040802	1/2 BSPP	1/8 BSPP
33040804	1/2 BSPP	1/4 BSPP
33040806	1/2 BSPP	3/8 BSPP
33041206	3/4 BSPP	3/8 BSPP
33041208	3/4 BSPP	1/2 BSPP



REDUCING NIPPLE

Part No	Pipe Thrd (M)	Pipe Thrd (M)
33240402	1/4 BSPT	1/8 BSPT
33240602	3/8 BSPT	1/8 BSPT
33240604	3/8 BSPT	1/4 BSPT
33240802	1/2 BSPT	1/8 BSPT
33240804	1/2 BSPT	1/4 BSPT
33240806	1/2 BSPT	3/8 BSPT
33241204	3/4 BSPT	1/4 BSPT
33041206	3/4 BSPT	3/8 BSPT
33241208	3/4 BSPT	1/2 BSPT



HEX NIPPLE

Part No	Pipe Thread	Tube Size
332502	1/8 BSPT	-
332504	1/4 BSPT	-
332506	3/8 BSPT	-
332508	1/2 BSPT	-
332512	3/4 BSPT	-
332516	1" BSPT	-



LONG BARREL NIPPLE

Part No	Pipe Thread	Length (inches)
3327021.5	1/8 BSPT	1.50
3327022.0	1/8 BSPT	2.00
3327022.5	1/8 BSPT	2.50
3327023.0	1/8 BSPT	3.00
3327041.5	1/4 BSPT	1.50
3327042.0	1/4 BSPT	2.00
3327042.5	1/4 BSPT	2.50
3327043.0	1/4 BSPT	3.00
3327061.5	3/8 BSPT	1.50
3327062.0	3/8 BSPT	2.00
3327062.5	3/8 BSPT	2.50
3327063.0	3/8 BSPT	3.00
3327081.5	1/2 BSPT	1.50
3327082.0	1/2 BSPT	2.00
3327082.5	1/2 BSPT	2.50
3327083.0	1/2 BSPT	3.00



90 DEG MALE TO FEMALE ELBOW

Part No	Pipe Thrd (F)	Pipe Thrd (M)
340002	1/8 BSPP	1/8 BSPT
340004	1/4 BSPP	1/4 BSPT
340006	3/8 BSPP	3/8 BSPT
340008	1/2 BSPP	1/2 BSPT



PIPE FITTINGS

45 DEG MALE TO FEMALE ELBOW

Part No	Pipe Thrd (F)	Pipe Thrd (M)
34004502	1/8 BSPP	1/8 BSPT
34004504	1/4 BSPP	1/4 BSPT
34004506	3/8 BSPP	3/8 BSPT
34004508	1/2 BSPP	1/2 BSPT



BULKHEAD UNION

Part No	Length	Male Thread	Pipe Thread
BU02L	27mm	1/4 BSPF	1/8 BSPP
BU04L	30mm	3/8 BSPF	1/4 BSPP



90 DEG FEMALE ELBOW

Part No	Pipe Thrd (F)	Tube Size
350002	1/8 BSPP	-
350004	1/4 BSPP	-
350006	3/8 BSPP	-
350008	1/2 BSPP	-



90 DEG MALE ELBOW

Part No	Pipe Thrd (M)	Pipe Thrd (M)
36000202	1/8 BSPT	1/8 BSPT
36000402	1/4 BSPT	1/8 BSPT
36000404	1/4 BSPT	1/4 BSPT
36000606	3/8 BSPT	3/8 BSPT
36000604	3/8 BSPT	1/4 BSPT
36000806	1/2 BSPT	3/8 BSPT
36000808	1/2 BSPT	1/2 BSPT



FEMALE TEE

Part No	Pipe Thread	Tube Size
370002	1/8 BSPP	-
370004	1/4 BSPP	-
370006	3/8 BSPP	-
370008	1/2 BSPP	-



FEMALE CROSS

Part No	Pipe Thread	Tube Size
390002	1/8 BSPP	-
390004	1/4 BSPP	-
390006	3/8 BSPP	-
390008	1/2 BSPP	-



MALE RUN TEE

Part No	Pipe Thrd (M)	Pipe Thrd (F)
400002	1/8 BSPT	1/8 BSPP
400004	1/4 BSPT	1/4 BSPP
400006	3/8 BSPT	3/8 BSPP



LOCK NUT

Part No	Pipe Thread	Tube Size
11102	1/8 BSPF	-
11104	1/4 BSPF	-
11106	3/8 BSPF	-
11108	1/2 BSPF	-



BULKHEAD UNION

Complete With Lock Washer & Nut

Part No	Length	Male Thread	Pipe Thread
BU02	1.5"	5/8 UNF	1/8 BSPT
BU04	1.5"	3/4 UNF	1/4 BSPT
BU06	1.5"	7/8 UNF	3/8 BSPT



COMPRESSION FITTINGS



STANDARD COMPRESSION FITTINGS are the most basic style of Compression Fitting made. This economical fitting is available in a wide range of off the shelf sizes and styles.

ADVANTAGES These fittings are easy to assemble requiring no soldering, flaring or deburring. Standard Compression Fittings are suitable for a wide variety of applications.

APPLICATIONS May be used with copper, aluminum, brass, plastic and steel tubing. Installation should be where low to medium pressures are encountered, and modest tube vibration/movement is involved. Suitable for hazardous liquids, oils and fuels.

WORKING PRESSURES Generally, working pressure is dependent upon the type of tubing used and not the fitting, consequently the table shown should be used as a guide ONLY.

ASSEMBLY

1. Slide the nut then sleeve onto the tube ensuring threaded end of nut is facing the sleeve.
2. If using a plastic tube, push a 261 Tube Insert into the tube to prevent the tube collapsing.
3. Insert the tube into the fitting until the tube has bottomed onto the fitting shoulder.
4. Screw the nut onto the fitting and tighten hand tight. Using the table below, follow the number of additional wrench turns.

Tube Size	Hydraulic PSI	Pneumatic PSI	Wrench Turns
1/8	500 PSI	290 PSI	1.0
3/16	500 PSI	250 PSI	1.0
1/4	400 PSI	200 PSI	1.0
5/16	400 PSI	200 PSI	1.0
3/8	290 PSI	150 PSI	1.5
1/2	290 PSI	150 PSI	1.5
5/8	200 PSI	100 PSI	1.5

COMPRESSION FITTINGS

COMPRESSION SLEEVE – NYLON

Part No	Tube Size	Pipe Thread
60N02	1/8	-
60N03	3/16	-
60N04	1/4	-
60N05	5/16	-
60N06	3/8	-
60N08	1/2	-
60N10	5/8	-



COMPRESSION SLEEVE – COPPER

Part No	Tube Size	Pipe Thread
6002	1/8	-
6003	3/16	-
6004	1/4	-
6005	5/16	-
6006	3/8	-
6008	1/2	-
6010	5/8	-



COMPRESSION NUT

Part No	Tube Size	Pipe Thread
6102	1/8	-
6103	3/16	-
6104	1/4	-
6105	5/16	-
6106	3/8	-
6108	1/2	-
6110	5/8	-



STRAIGHT UNION

Part No	Tube Size	Pipe Thread
6202	1/8	-
6203	3/16	-
6204	1/4	-
6205	5/16	-
6206	3/8	-
6208	1/2	-
6210	5/8	-



UNION TEE

Part No	Tube Size	Pipe Thread
6402	1/8	-
6403	3/16	-
6404	1/4	-
6405	5/16	-
6406	3/8	-
6408	1/2	-



UNION ELBOW

Part No	Tube Size	Pipe Thread
6502	1/8	-
6503	3/16	-
6504	1/4	-
6505	5/16	-
6506	3/8	-
6508	1/2	-



FEMALE CONNECTOR

Part No	Tube Size	Pipe Thread
660202	1/8	1/8 BSPP
660302	3/16	1/8 BSPP
660402	1/4	1/8 BSPP
660404	1/4	1/4 BSPP
660502	5/16	1/8 BSPP
660504	5/16	1/4 BSPP
660602	3/8	1/8 BSPP
660604	3/8	1/4 BSPP
660606	3/8	3/8 BSPP
660608	3/8	1/2 BSPP
660806	1/2	3/8 BSPP
660808	1/2	1/2 BSPP



MALE CONNECTOR

Part No	Tube Size	Pipe Thread
680202	1/8	1/8 BSPT
680302	3/16	1/8 BSPT
680304	3/16	1/4 BSPT
680402	1/4	1/8 BSPT
680404	1/4	1/4 BSPT
680406	1/4	3/8 BSPT
680408	1/4	1/2 BSPT
680502	5/16	1/8 BSPT
680504	5/16	1/4 BSPT
680506	5/16	3/8 BSPT
680508	5/16	1/2 BSPT
680602	3/8	1/8 BSPT
680604	3/8	1/4 BSPT
680606	3/8	3/8 BSPT
680608	3/8	1/2 BSPT
680804	1/2	1/4 BSPT
680806	1/2	3/8 BSPT
680808	1/2	1/2 BSPT
681006	5/8	3/8 BSPT
681008	5/8	1/2 BSPT



MALE ELBOW 90°

Part No	Tube Size	Pipe Thread
690202	1/8	1/8 BSPT
690302	3/16	1/8 BSPT
690402	1/4	1/8 BSPT
690404	1/4	1/4 BSPT
690406	1/4	3/8 BSPT
690502	5/16	1/8 BSPT
690504	5/16	1/4 BSPT
690602	3/8	1/8 BSPT
690604	3/8	1/4 BSPT
690606	3/8	3/8 BSPT
690608	3/8	1/2 BSPT
690804	1/2	1/4 BSPT
690806	1/2	3/8 BSPT
690808	1/2	1/2 BSPT
691006	5/8	3/8 BSPT
691008	5/8	1/2 BSPT



COMPRESSION FITTINGS

TUBE INSERT

Part No	Tube Size	Tube ID
26103	3/16	3.10mm
26104	1/4	3.86mm
26105	5/16	5.03mm
26106	3/8	5.84mm
26108	1/2	9.14mm
26110	5/8	12.20mm



METRIC TUBE INSERT

Part No	Tube Size	Pipe Thread
M26104	4mm	-
M26106	6mm	-
M26108	8mm	-
M26110	10mm	-
M26112	12mm	-



METRIC COMPRESSION SLEEVE

Part No	Tube Size	Pipe Thread
M60N04	4mm	-
M60N06	6mm	-
M60N08	8mm	-
M60N10	10mm	-
M60N12	12mm	-



METRIC COMPRESSION NUT

Part No	Tube Size	Pipe Thread
M6104	4mm	-
M6106	6mm	-
M6108	8mm	-
M6110	10mm	-
M6112	12mm	-



METRIC COMPRESSION UNION

Part No	Tube Size	Pipe Thread
M6204	4mm	-
M6206	6mm	-
M6208	8mm	-
M6210	10mm	-
M6212	12mm	-



METRIC MALE CONNECTOR

Part No	Tube Size	Pipe Thread
M680402	4mm	1/8 BSPT
M680602	6mm	1/8 BSPT
M680604	6mm	1/4 BSPT
M680804	8mm	1/4 BSPT
M680806	8mm	3/8 BSPT
M681004	10mm	1/4 BSPT
M681006	10mm	3/8 BSPT
M681204	12mm	1/4 BSPT
M681206	12mm	3/8 BSPT



METRIC MALE ELBOW

Part No	Tube Size	Pipe Thread
M690402	4mm	1/8 BSPT
M690602	6mm	1/8 BSPT
M690604	6mm	1/4 BSPT
M690804	8mm	1/4 BSPT
M690806	8mm	3/8 BSPT
M691004	10mm	1/4 BSPT
M691006	10mm	3/8 BSPT
M691204	12mm	1/4 BSPT
M691206	12mm	3/8 BSPT



45° FLARE FITTINGS



FLARE FITTINGS are manufactured especially with hazardous liquids and gases in mind. These fittings are available in sizes ranging from 3/16 to 1/2.

ADVANTAGES May be assembled and disassembled numerous times. When used with the appropriate tubing, they can withstand high pressures. For improved resistance to mechanical vibration the Long Flare Nut may be used.

APPLICATIONS Use with copper, brass, aluminum and flareable steel pipe. Flare Fittings can be used where medium to high pressures are encountered and are ideal for use with fuel, air, oil, water, LPG and Natural Gas Lines.

WORKING PRESSURES Flare Fittings are able to withstand high pressures, use the table below as a guideline ONLY.

Usually the type of pipe used rather than the Flare Fitting itself determines the pressures.

ASSEMBLY

1. Slide the nut tapered end first onto the tubing.
2. Using a 45 degree flaring tool, flare the end of the tube until the flare sits inside the nut. On thin wall tube, a double flare is recommended to prevent pinch off.
3. Assemble fitting to body and tighten nut to hand tight.
4. Using a wrench tighten the nut until a leak proof metal joint is achieved.

To avoid premature failure of the fitting, do not over tighten.

Tube Size	Hydraulic P.S.I	Pneumatic P.S.I
1/8	2500 PSI	700 PSI
3/16	2500 PSI	700 PSI
1/4	2000 PSI	700 PSI
5/16	2000 PSI	700 PSI
3/8	1500 PSI	400 PSI
1/2	1020 PSI	250 PSI

45° FLARE FITTINGS

FLARE PLUG

Part No	Tube Size	Pipe Thread
39P04	1/4	-
39P05	5/16	-
39P06	3/8	-
39P08	1/2	-



FLARE CAP

Part No	Tube Size	Pipe Thread
40C04	1/4	-
40C05	5/16	-
40C06	3/8	-
40C08	1/2	-



SHORT FLARE NUT

Part No	Tube Size	Pipe Thread
41S03	3/16	-
41S04	1/4	-
41S05	5/16	-
41S06	3/8	-
41S08	1/2	-



LONG FLARE NUT

Part No	Tube Size	Pipe Thread
4103	3/16	-
4104	1/4	-
4105	5/16	-
4106	3/8	-
4108	1/2	-



FLARE UNION

Part No	Tube Size	Pipe Thread
4203	3/16	-
4204	1/4	-
4205	5/16	-
4206	3/8	-
4208	1/2	-



FLARE UNION TEE

Part No	Tube Size	Pipe Thread
4403	3/16	-
4404	1/4	-
4405	5/16	-
4406	3/8	-
4408	1/2	-



FEMALE FLARE CONNECTOR

Part No	Tube Size	Pipe Thread
460302	3/16	1/8 BSPP
460402	1/4	1/8 BSPP
460404	1/4	1/4 BSPP
460502	5/16	1/8 BSPP
460504	5/16	1/4 BSPP
460602	3/8	1/8 BSPP
460604	3/8	1/4 BSPP
460606	3/8	3/8 BSPP
460608	3/8	1/2 BSPP
460804	1/2	1/4 BSPP
460806	1/2	3/8 BSPP
460808	1/2	1/2 BSPP



MALE FLARE CONNECTOR

Part No	Tube Size	Pipe Thread
480302	3/16	1/8 BSPT
480402	1/4	1/8 BSPT
480404	1/4	1/4 BSPT
480502	5/16	1/8 BSPT
480504	5/16	1/4 BSPT
480602	3/8	1/8 BSPT
480604	3/8	1/4 BSPT
480606	3/8	3/8 BSPT
480608	3/8	1/2 BSPT
480804	1/2	1/4 BSPT
480806	1/2	3/8 BSPT
480808	1/2	1/2 BSPT



MALE FLARE ELBOW

Part No	Tube Size	Pipe Thread
490302	3/16	1/8 BSPT
490402	1/4	1/8 BSPT
490404	1/4	1/4 BSPT
490502	5/16	1/8 BSPT
490504	5/16	1/4 BSPT
490602	3/8	1/8 BSPT
490604	3/8	1/4 BSPT
490606	3/8	3/8 BSPT
490804	1/2	1/4 BSPT
490806	1/2	3/8 BSPT
490808	1/2	1/2 BSPT



AIRBRAKE & NPT PIPE FITTINGS



NTA AIRBRAKE FITTINGS



NTA AIRBRAKE FITTINGS are manufactured specifically for use in truck and trailer air braking systems. These easy to assemble fittings can also be used in secondary air systems where D.O.T approved fittings are required.

NTA Airbrake Fittings are available in 1/4" to 1/2" NPT Pipe Threads and 1/4" to 5/8" tubing sizes.

ADVANTAGES Easy to assemble with no tube preparation or bending required. NTA Airbrake Fittings have a built in tube support and can be assembled and disassembled many times.

APPLICATIONS These fittings are designed specifically for use in Truck and Trailer air braking systems except where temperatures exceed 200 degrees fahrenheit or where battery acid can drip on to the tubing.

WORKING PRESSURE Up to 150 P.S.I

FITTING SPECIFICATIONS NTA Airbrake Fittings are manufactured to meet D.O.T FMVSS 571.106 airbrake specifications.

TUBING SPECIFICATIONS NTA Airbrake Fittings meet the functional requirements of the SAE automotive fitting standards: SAE J246 and SAE J1131. Use with SAE Type A and B Nylon Airbrake Tubing,

ASSEMBLY

1. Slide the nut and then the sleeve over the tubing
2. Push the tubing into the fitting until the tubing bottoms out in the fitting
3. Then slide the olive and nut down onto the fitting and tighten the nut to the correct torque as per the table below

TUBE SIZE O.D	TORQUE ft. lbs
1/4	85 – 115in. lbs
3/8	12 – 17 ft. lbs
1/2	25 – 33 ft. lbs
5/8	26 – 35 ft. lbs

NTA AIRBRAKE FITTINGS

SLEEVE

Part No	Tube OD	Pipe Thread
W146004	1/4	-
W146006	3/8	-
W146008	1/2	-
W146010	5/8	-



MALE BRANCH TEE

Part No	Tube OD	Pipe Thread
W14720604	3/8	1/4 NPT



45° MALE ELBOW

Part No	Tube OD	Pipe Thread
W14800402	1/4	1/8 NPT
W14800404	1/4	1/4 NPT
W14800604	3/8	1/4 NPT
W14800606	3/8	3/8 NPT
W14800804	1/2	1/4 NPT
W14800806	1/2	3/8 NPT



NUT

Part No	Tube OD	Pipe Thread
W146104	1/4	-
W146106	3/8	-
W146108	1/2	-
W146110	5/8	-



UNION

Part No	Tube OD	Pipe Thread
W146204	1/4	-
W146206	3/8	-
W146208	1/2	-
W146210	5/8	-
W146212	3/4	-



TUBE INSERT

Part No	Tube OD	Pipe Thread
W148404	1/4	-
W148406	3/8	-
W148408	1/2	-
W148410	5/8	-
W148412	3/4	-



UNION TEE

Part No	Tube OD	Pipe Thread
W146404	1/4	-
W146406	3/8	-
W146408	1/2	-



MALE CONNECTOR

Part No	Tube OD	Pipe Thread
W14680402	1/4	1/8 NPT
W14680404	1/4	1/4 NPT
W14680406	1/4	3/8 NPT
W14680602	3/8	1/8 NPT
W14680604	3/8	1/4 NPT
W14680606	3/8	3/8 NPT
W14680608	3/8	1/2 NPT
W14680804	1/2	1/4 NPT
W14680806	1/2	3/8 NPT
W14680808	1/2	1/2 NPT
W14681006	5/8	3/8 NPT
W14681008	5/8	1/2 NPT



MALE ELBOW

Part No	Tube OD	Pipe Thread
W14690402	1/4	1/8 NPT
W14690404	1/4	1/4 NPT
W14690406	1/4	3/8 NPT
W14690602	3/8	1/8 NPT
W14690604	3/8	1/4 NPT
W14690606	3/8	3/8 NPT
W14690608	3/8	1/2 NPT
W14690804	1/2	1/4 NPT
W14690806	1/2	3/8 NPT
W14690808	1/2	1/2 NPT
W14691006	5/8	3/8 NPT
W14691008	5/8	1/2 NPT



PUSH TO CONNECT AIRBRAKE FITTINGS



PUSH TO CONNECT AIRBRAKE FITTINGS are manufactured especially for use in truck and trailer air braking systems. These can also be used in secondary air systems where a D.O.T approved fitting is required.

ADVANTAGES These fittings are corrosion resistant and offer reduced assembly and maintenance times and also labour cost savings. Push to Connect Fittings offer a simple tube connection and disconnection with no special assembly tools required.

APPLICATIONS Push to Connect Fittings are engineered specifically for use in truck and trailer air braking systems other than between the chassis frame and axle or between towed and towing vehicle.

FITTING SPECIFICATIONS Push Connect Fittings are manufactured to meet D.O.T FMVSS106, SAE J1131 and DIN 74324 standards.

WORKING PRESSURE Up To 150 PSI

ASSEMBLY Simply push the tubing into the fitting until the tubing bottoms out. Then pull the tubing forward to gently lock into place. To remove the tubing from the fitting, simply push the collet on the end of the fitting back and pull the tubing out.

PUSH TO CONNECT AIRBRAKE FITTINGS

UNION – IMPERIAL

Part No	Tube OD	Pipe Thread
W186202.5	5/32	-
W186204	1/4	-
W186206	3/8	-
W186208	1/2	-
W186210	5/8	-



UNION TEE – IMPERIAL

Part No	Tube OD	Pipe Thread
W186404	1/4	-
W186406	3/8	-
W186408	1/2	-
W186410	5/8	-



MALE CONNECTOR – IMPERIAL

Part No	Tube OD	Pipe Thread
W18680402	1/4	1/8 NPT
W18680404	1/4	1/4 NPT
W18680406	1/4	3/8 NPT
W18680602	3/8	1/8 NPT
W18680604	3/8	1/4 NPT
W18680606	3/8	3/8 NPT
W18680608	3/8	1/2 NPT
W18680804	1/2	1/4 NPT
W18680806	1/2	3/8 NPT
W18680808	1/2	1/2 NPT
W18681006	5/8	3/8 NPT
W18681008	5/8	1/2 NPT
W186806M12	3/8	M12 x 1.5
W186806M16	3/8	M16 x 1.5
W186806M22	3/8	M22 x 1.5



MALE ELBOW 90 DEG – IMPERIAL

Part No	Tube OD	Pipe Thread
W18690402	1/4	1/8 NPT
W18690404	1/4	1/4 NPT
W18690406	1/4	3/8 NPT
W18690602	3/8	1/8 NPT
W18690604	3/8	1/4 NPT
W18690606	3/8	3/8 NPT
W18690608	3/8	1/2 NPT
W18690804	1/2	1/4 NPT
W18690806	1/2	3/8 NPT
W18690808	1/2	1/2 NPT
W18691006	5/8	3/8 NPT
W18691008	5/8	1/2 NPT
W186906M12	3/8	M12 x 1.5
W186906M16	3/8	M16 x 1.5
W186906M22	3/8	M22 x 1.5



MALE RUN TEE – IMPERIAL

Part No	Tube OD	Pipe Thread
W18710402	1/4	1/8 NPT
W18710404	1/4	1/4 NPT
W18710604	3/8	1/4 NPT
W18710606	3/8	3/8 NPT
W18710806	1/2	3/8 NPT



MALE BRANCH TEE – IMPERIAL

Part No	Tube OD	Pipe Thread
W18720402	1/4	1/8 NPT
W18720404	1/4	1/4 NPT
W18720604	3/8	1/4 NPT
W18720606	3/8	3/8 NPT
W18720804	1/2	1/4 NPT
W18720806	1/2	3/8 NPT



MALE ELBOW 45 DEG – IMPERIAL

Part No	Tube OD	Pipe Thread
W18800402	1/4	1/8 NPT
W18800404	1/4	1/4 NPT
W18800604	3/8	1/4 NPT
W18800606	3/8	3/8 NPT
W18800804	1/2	1/4 NPT
W18800806	1/2	3/8 NPT
W18800808	1/2	1/2 NPT
W18801008	5/8	1/2 NPT



UNION – METRIC

Part No	Tube OD	Pipe Thread
W116204M	4mm	-
W116206M	6mm	-
W116208M	8mm	-
W116209M	9mm	-
W116210M	10mm	-
W116211M	11mm	-
W116212M	12mm	-
W116215M	15mm	-
W116216M	16mm	-



UNION TEE – METRIC

Part No	Tube OD	Pipe Thread
W116404M	4MM	-
W116406M	6mm	-
W116408M	8mm	-
W116410M	10mm	-
W116412M	12mm	-



MALE CONNECTOR – METRIC

Part No	Tube OD	Pipe Thread
W116806M02	6mm	1/8 NPT
W116806M04	6mm	1/4 NPT
W116808M02	8mm	1/8 NPT
W116808M04	8mm	1/4 NPT
W116808M06	8mm	3/8 NPT
W116810M04	10mm	1/4 NPT
W116810M06	10mm	3/8 NPT
W116812M04	12mm	1/4 NPT
W116812M06	12mm	3/8 NPT
W116812M08	12mm	1/2 NPT
W116815M06	15mm	3/8 NPT
W116806M12	6mm	M12 x 1.5
W116806M16	6mm	M16 x 1.5
W116806M22	6mm	M22 x 1.5
W116808M12	8mm	M12 x 1.5
W116808M16	8mm	M16 x 1.5
W116808M22	8mm	M22 x 1.5
W116810M12	10mm	M12 x 1.5
W116810M16	10mm	M16 x 1.5
W116810M22	10mm	M22 x 1.5
W116812M12	12mm	M12 x 1.5
W116812M16	12mm	M16 x 1.5
W116812M22	12mm	M22 x 1.5



PUSH TO CONNECT AIRBRAKE FITTINGS

MALE ELBOW – METRIC

Part No	Tube OD	Pipe Thread
W116906M02	6mm	1/8 NPT
W116906M04	6mm	1/4 NPT
W116908M02	8mm	1/8 NPT
W116908M04	8mm	1/4 NPT
W116908M06	8mm	3/8 NPT
W116910M04	10mm	1/4 NPT
W116910M06	10mm	3/8 NPT
W116912M04	12mm	1/4 NPT
W116912M06	12mm	3/8 NPT
W116912M08	12mm	1/2 NPT
W116906M12	6mm	M12 x 1.5
W116906M16	6mm	M16 x 1.5
W116906M22	6mm	M22 x 1.5
W116908M12	8mm	M12 x 1.5
W116908M16	8mm	M16 x 1.5
W116908M22	8mm	M22 x 1.5
W116910M12	10mm	M12 x 1.5
W116910M16	10mm	M16 x 1.5
W116910M22	10mm	M22 x 1.5
W116912M12	12mm	M12 x 1.5
W116912M16	12mm	M16 x 1.5
W116912M22	12mm	M22 x 1.5



PIPE FITTINGS - NPT & METRIC

HEX TAPER PLUG – NPT

Part No	Pipe Thread
W315202	1/8 NPT
W315204	1/4 NPT
W315206	3/8 NPT
W315208	1/2 NPT
W315212	3/4 NPT



HEX NIPPLE – NPT

Part No	Pipe Thrd (M)	Pipe Thrd (M)
W332502	1/8 NPT	-
W332504	1/4 NPT	-
W332506	3/8 NPT	-
W332512	3/4 NPT	-



METRIC PLUGS – PARALLEL THREAD

Part No	Pipe Thread (M)
3152M16	M16 x 1.5
3152M22	M22 x 1.5



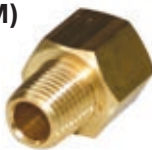
MALE / FEMALE ELBOW 45 DEG - NPT

Part No	Pipe Thrd (F)	Pipe Thrd (M)
W335002	1/8 NPT	1/8 NPT
W335004	1/4 NPT	1/4 NPT
W335006	3/8 NPT	3/8 NPT



MALE/FEMALE ADAPTOR - NPT

Part No	Pipe Thrd (F)	Pipe Thrd (M)
W32000402	1/4 NPT	1/8 NPT
W32000604	3/8 NPT	1/4 NPT
W32000806	1/2 NPT	3/8 NPT
W32001208	3/4 NPT	1/2 NPT



MALE / FEMALE ELBOW 90 DEG - NPT

Part No	Pipe Thrd (F)	Pipe Thrd (M)
W340002	1/8 NPT	1/8 NPT
W340004	1/4 NPT	1/4 NPT
W340006	3/8 NPT	3/8 NPT
W340008	1/2 NPT	1/2 NPT



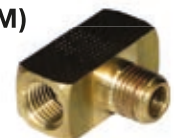
METRIC TO NPT ADAPTORS

Part No	Pipe Thrd (M)	Pipe Thrd (F)
3200M1202	M12 x 1.5	1/8 NPT
3200M1204	M12 x 1.5	1/4 NPT
3200M1404	M14 x 1.5	1/4 NPT
3200M1604	M16 x 1.5	1/4 NPT
3200M1606	M16 x 1.5	3/8 NPT
3200M2204	M22 x 1.5	1/4 NPT
3200M2206	M22 x 1.5	3/8 NPT



MALE BRANCH TEE - NPT

Part No	Pipe Thrd (F)	Pipe Thrd (M)
W360002	1/8 NPT	1/8 NPT
W360004	1/4 NPT	1/4 NPT
W360006	3/8 NPT	3/8 NPT
W360008	1/2 NPT	1/2 NPT
W3600M2215	M22 x 1.5	M22 x 1.5



FEMALE TEE – NPT

Part No	Pipe Thread (F)
W370002	1/8 NPT
W370004	1/4 NPT
W370006	3/8 NPT
W370008	1/2 NPT



REDUCING BUSH – NPT

Part No	Pipe Thrd (M)	Pipe Thrd (F)
W32200402	1/4 NPT	1/8 NPT
W32200602	3/8 NPT	1/8 NPT
W32200604	3/8 NPT	1/4 NPT
W32200802	1/2 NPT	1/8 NPT
W32200804	1/2 NPT	1/4 NPT
W32200806	1/2 NPT	3/8 NPT
W32201204	3/4 NPT	1/4 NPT
W32201206	3/4 NPT	3/8 NPT
W32201208	3/4 NPT	1/2 NPT
W322012M22	3/4 NPT	M22 x 1.5



MALE RUN TEE – NPT

Part No	Pipe Thrd (F)	Pipe Thrd (M)
W375002	1/8 NPT	1/8 NPT
W375004	1/4 NPT	1/4 NPT
W375006	3/8 NPT	3/8 NPT
W375008	1/2 NPT	1/2 NPT
W3750M2215	M22 x 1.5	M22 x 1.5



HEX SOCKET – NPT

Part No	Pipe Thrd (F)	Pipe Thrd (M)
W330002	1/8 NPT	-
W330004	1/4 NPT	-
W330006	3/8 NPT	-



REDUCING NIPPLE - NPT

Part No	Pipe Thrd (M)	Pipe Thrd (M)
W33240402	1/4 NPT	1/8 NPT
W33240604	3/8 NPT	1/4 NPT
W33240804	1/2 NPT	1/4 NPT
W33240806	1/2 NPT	3/8 NPT
W33241208	3/4 NPT	1/2 NPT



METRIC THREADED HOSE TAILS

Part No	Hose Size	Pipe Thread
W20906M16	3/8	M16 x 1.5
W20908M16	1/2	M16 x 1.5
W20908M22	1/2	M22 x 1.5



MALE HOSE TAILS - NPT

Part No	Hose Size	Pipe Thread
W2090504	5/16	1/4 NPT
W2090604	3/8	1/4 NPT
W2090606	3/8	3/8 NPT
W2090804	1/2	1/4 NPT
W2090806	1/2	3/8 NPT
W2090808	1/2	1/2 NPT



ROADRANGER FITTINGS

PIPE FITTINGS - NPT

ROADRANGER OLIVE

Part No	Tube OD	Pipe Thread
RR6002	1/8	-
RR6025	5/32	-



ROADRANGER NUT

Part No	Tube OD	Pipe Thread
RR6102	1/8	-
RR6125	5/32	-



ROADRANGER UNION

Part No	Tube OD	Pipe Thread
RR6202	1/8	-
RR6225	5/32	-



ROADRANGER MALE CONNECTOR

Part No	Tube OD	Pipe Thread
RR680202	1/8	1/8 NPT
RR682502	5/32	1/8 NPT



ROADRANGER MALE ELBOW

Part No	Tube OD	Pipe Thread
RR690202	1/8	1/8 NPT
RR692502	5/32	1/8 NPT



REMOTE DRAIN VALVE

Part No	Pipe Thread	Cable Length
W1421	1/4" NPT	5 FT
W1421M22	M22 x 1.5	Not Supplied



TEST POINTS

Part No	Pipe Thread
XBFWTP04	1/4 NPT
XBFWTP06	3/8 NPT
XBFWTPM16	M16 x 1.5



RUBBER AIRBRAKE HOSE ENDS - D.O.T

HOSE SLEEVE

Part No	Hose Size
W149006	3/8 I.D
W149008	1/2 I.D



HOSE NUT

Part No	Hose Size
W149006	3/8 I.D
W149008	1/2 I.D



ROADRANGER MALE ELBOW

Part No	Tube OD	Pipe Thread
W14920604	3/8	1/4 NPT
W14920606	3/8	3/8 NPT
W14920806	1/2	3/8 NPT



- Use with Rubber Airbrake Hose J1402
- These fittings are reusable by replacement of hose sleeve & hose nut

PNEUMATIC FITTINGS



ADVANCED
PNEUMATIC
INDUSTRIES



PNEUMATIC FITTINGS

UNION STRAIGHT IMPERIAL

Part No	Tube OD	Pipe Thread
PF126202.5	5/32	-
PF126204	1/4	-
PF126206	3/8	-
PF126208	1/2	-



UNION TEE IMPERIAL

Part No	Tube OD	Pipe Thread
PF126404	1/4	-
PF126406	3/8	-
PF126408	1/2	-



UNION ELBOW IMPERIAL

Part No	Tube OD	Pipe Thread
PF126504	1/4	-
PF126505	5/16	-
PF126508	1/2	-



MALE CONNECTOR IMPERIAL

Part No	Tube OD	Pipe Thread
PF12680202	1/8	1/8 BSPT
PF12680402	1/4	1/8 BSPT
PF12680404	1/4	1/4 BSPT
PF12680504	5/16	1/4 BSPT
PF12680602	3/8	1/8 BSPT
PF12680604	3/8	1/4 BSPT
PF12680606	3/8	3/8 BSPT
PF12680804	1/2	1/4 BSPT
PF12680806	1/2	3/8 BSPT
PF12680808	1/2	1/2 BSPT



SWIVEL MALE ELBOW IMPERIAL

Part No	Tube OD	Pipe Thread
PF12690402	1/4	1/8 BSPT
PF12690404	1/4	1/4 BSPT
PF12690502	5/16	1/8 BSPT
PF12690504	5/16	1/4 BSPT
PF12690506	5/16	3/8 BSPT
PF12690602	3/8	1/8 BSPT
PF12690604	3/8	1/4 BSPT
PF12690606	3/8	3/8 BSPT
PF12690804	1/2	1/4 BSPT
PF12690806	1/2	3/8 BSPT
PF12690808	1/2	1/2 BSPT



CAP METRIC

Part No	Tube OD	Pipe Thread
PF153306	6mm	-
PF153308	8mm	-
PF153310	10mm	-
PF153312	12mm	-



PLUG METRIC

Part No	Tube OD	Pipe Thread
PF155206	6mm	-
PF155208	8mm	-
PF155210	10mm	-
PF155212	12mm	-



UNION STRAGHT METRIC

Part No	Tube OD	Pipe Thread
PF156204	4mm	-
PF156206	6mm	-
PF156208	8mm	-
PF156210	10mm	-
PF156212	12mm	-



REDUCING UNION METRIC

Part No	Tube OD	Pipe Thread
PF1562R0604	6mm	4mm
PF1562R0806	8mm	6mm
PF1562R1006	10mm	6mm
PF1562R1008	10mm	8mm
PF1562R1210	12mm	10mm



UNION Y METRIC

Part No	Tube OD	Pipe Thread
PF156306	6mm	-
PF156308	8mm	-
PF156310	10mm	-
PF156312	12mm	-



UNION TEE METRIC

Part No	Tube OD	Pipe Thread
PF156404	4mm	-
PF156406	6mm	-
PF156408	8mm	-
PF156410	10mm	-
PF156412	12mm	-



UNION ELBOW METRIC

Part No	Tube OD	Pipe Thread
PF156504	4mm	-
PF156506	6mm	-
PF156508	8mm	-
PF156510	10mm	-
PF156512	12mm	-



FEMALE CONNECTOR METRIC

Part No	Tube OD	Pipe Thread
PF15660602	6mm	1/8 BSPT
PF15660604	6mm	1/4 BSPT
PF15660804	8mm	1/4 BSPT
PF15661004	10mm	1/4 BSPT
PF15661204	12mm	1/4 BSPT
PF15661206	12mm	3/8 BSPT
PF15661208	12mm	1/2 BSPT



STEM REDUCER METRIC

Part No	Tube OD	Tube OD
PF15670604	6mm	4mm
PF15670806	8mm	6mm
PF15671008	10mm	8mm
PF15671210	12mm	10mm



PNEUMATIC FITTINGS

MALE CONNECTOR METRIC

Part No	Tube OD	Pipe Thread
PF15680402	4mm	1/8 BSPT
PF15680404	4mm	1/4 BSPT
PF15680602	6mm	1/8 BSPT
PF15680604	6mm	1/4 BSPT
PF15680802	8mm	1/8 BSPT
PF15680804	8mm	1/4 BSPT
PF15680806	8mm	3/8 BSPT
PF15681004	10mm	1/4 BSPT
PF15681006	10mm	3/8 BSPT
PF15681204	12mm	1/4 BSPT
PF15681206	12mm	3/8 BSPT
PF15681208	12mm	1/2 BSPT



MALE CONNECTOR METRIC

Part No	Tube OD	Pipe Thread
PFP15680402	4mm	1/8 BSPP
PFP15680404	4mm	1/4 BSPP
PFP15680405	4mm	M5
PFP15680602	6mm	1/8 BSPP
PFP15680604	6mm	1/4 BSPP
PFP15680605	6mm	M5
PFP15680802	8mm	1/8 BSPP
PFP15680804	8mm	1/4 BSPP
PFP15680806	8mm	3/8 BSPP
PFP15681004	10mm	1/4 BSPP
PFP15681006	10mm	3/8 BSPP
PFP15681204	12mm	1/4 BSPP
PFP15681206	12mm	3/8 BSPP



SWIVEL MALE ELBOW METRIC

Part No	Tube OD	Pipe Thread
PF15690402	4mm	1/8 BSPT
PF15690404	4mm	1/4 BSPT
PF15690602	6mm	1/8 BSPT
PF15690604	6mm	1/4 BSPT
PF15690802	8mm	1/8 BSPT
PF15690804	8mm	1/4 BSPT
PF15690806	8mm	3/8 BSPT
PF15691004	10mm	1/4 BSPT
PF15691006	10mm	3/8 BSPT
PF15691204	12mm	1/4 BSPT
PF15691206	12mm	3/8 BSPT



SWIVEL MALE ELBOW METRIC

Part No	Tube OD	Pipe Thread
PFP15690402	4mm	1/8 BSPP
PFP15690404	4mm	1/4 BSPP
PFP15690405	4mm	M5
PFP15690602	6mm	1/8 BSPP
PFP15690604	6mm	1/4 BSPP
PFP15690605	6mm	M5
PFP15690802	8mm	1/8 BSPP
PFP15690804	8mm	1/4 BSPP
PFP15690806	8mm	3/8 BSPP
PFP15691004	10mm	1/4 BSPP
PFP15691006	10mm	3/8 BSPP
PFP15691204	12mm	1/4 BSPP
PFP15691206	12mm	3/8 BSPP



SWIVEL MALE RUN TEE METRIC

Part No	Tube OD	Pipe Thread
PF15710602	6mm	1/8 BSPT
PF15710604	6mm	1/4 BSPT
PF15710802	8mm	1/8 BSPT
PF15710804	8mm	1/4 BSPT
PF15711004	10mm	1/4 BSPT
PF15711006	10mm	3/8 BSPT
PF15711204	12mm	1/4 BSPT
PF15711206	12mm	3/8 BSPT



SWIVEL MALE BRANCH TEE METRIC

Part No	Tube OD	Pipe Thread
PF15720402	4mm	1/8 BSPT
PF15720602	6mm	1/8 BSPT
PF15720604	6mm	1/4 BSPT
PF15720802	8mm	1/8 BSPT
PF15720804	8mm	1/4 BSPT
PF15721004	10mm	1/4 BSPT
PF15721006	10mm	3/8 BSPT
PF15721204	12mm	1/4 BSPT
PF15721206	12mm	3/8 BSPT



BULKHEAD UNION METRIC

Part No	Tube OD	Pipe Thread
PF157406	6mm	-
PF157408	8mm	-
PF157410	10mm	-
PF157412	12mm	-



STEM ELBOW METRIC

Part No	Tube OD	Pipe Thread
PF15750606	6mm	-
PF15750808	8mm	-
PF15751010	10mm	-
PF15751212	12mm	-



BANJO FLOW CONTROLLER

Part No	Tube OD	Pipe Thread
PFBFC0602	6mm	1/8 BSPT
PFBFC0604	6mm	1/4 BSPT
PFBFC0804	8mm	1/4 BSPT
PFBFC0806	8mm	3/8 BSPT
PFBFC1004	10mm	1/4 BSPT
PFBFC1006	10mm	3/8 BSPT
PFBFC1204	12mm	1/4 BSPT
PFBFC1206	12mm	3/8 BSPT
PFBFC1208	12mm	1/2 BSPT



INLINE FLOW CONTROLLER

Part No	Tube OD	Pipe Thread
PFFCI06	6mm	-
PFFCI08	8mm	-
PFFCI10	10mm	-



PNEUMATIC FITTINGS

STEM ADAPTOR METRIC

Part No	Tube OD	Pipe Thread
PFNP15590602	6mm	1/8 BSPP
PFNP15590604	6mm	1/4 BSPP
PFNP15590802	8mm	1/8 BSPP
PFNP15590804	8mm	1/4 BSPP
PFNP15591004	10mm	1/4 BSPP
PFNP15591006	10mm	3/8 BSPP
PFNP15591206	12mm	3/8 BSPP



UNION STRAIGHT METRIC

Part No	Tube OD	Pipe Thread
PFN156204	4mm	-
PFN156206	6mm	-
PFN156208	8mm	-
PFN156210	10mm	-
PFN156212	12mm	-



UNION TEE METRIC

Part No	Tube OD	Pipe Thread
PFN156406	6mm	-
PFN156408	8mm	-
PFN156410	10mm	-
PFN156412	12mm	-



UNION ELBOW METRIC

Part No	Tube OD	Pipe Thread
PFN156506	6mm	-
PFN156508	8mm	-
PFN156510	10mm	-
PFN156512	12mm	-



STEM REDUCER METRIC

Part No	Tube OD	Tube OD
PFN15670604	6mm	4mm
PFN15670806	8mm	6mm
PFN15671008	10mm	8mm
PFN15671210	12mm	10mm



MALE CONNECTOR METRIC

Part No	Tube OD	Pipe Thread
PFN15680402	4mm	1/8 BSPT
PFN15680404	4mm	1/4 BSPT
PFN15680602	6mm	1/8 BSPT
PFN15680604	6mm	1/4 BSPT
PFN15680802	8mm	1/8 BSPT
PFN15680804	8mm	1/4 BSPT
PFN15680806	8mm	3/8 BSPT
PFN15681004	10mm	1/4 BSPT
PFN15681006	10mm	3/8 BSPT
PFN15681204	12mm	1/4 BSPT
PFN15681206	12mm	3/8 BSPT



MALE CONNECTOR METRIC

Part No	Tube OD	Pipe Thread
PFNP15680402	4mm	1/8 BSPP
PFNP15680404	4mm	1/4 BSPP
PFNP15680602	6mm	1/8 BSPP
PFNP15680604	6mm	1/4 BSPP
PFNP15680802	8mm	1/8 BSPP
PFNP15680804	8mm	1/4 BSPP
PFNP15680806	8mm	3/8 BSPP
PFNP15681004	10mm	1/4 BSPP
PFNP15681006	10mm	3/8 BSPP
PFNP15681204	12mm	1/4 BSPP
PFNP15681206	12mm	3/8 BSPP



SWIVEL MALE ELBOW METRIC

Part No	Tube OD	Pipe Thread
PFN15690602	6mm	1/8 BSPT
PFN15690604	6mm	1/4 BSPT
PFN15690802	8mm	1/8 BSPT
PFN15690804	8mm	1/4 BSPT
PFN15690806	8mm	3/8 BSPT
PFN15691004	10mm	1/4 BSPT
PFN15691006	10mm	3/8 BSPT
PFN15691206	12mm	3/8 BSPT



SWIVEL MALE ELBOW METRIC

Part No	Tube OD	Pipe Thread
PFNP15690402	4mm	1/8 BSPP
PFNP15690404	4mm	1/4 BSPP
PFNP15690602	6mm	1/8 BSPP
PFNP15690604	6mm	1/4 BSPP
PFNP15690802	8mm	1/8 BSPP
PFNP15690804	8mm	1/4 BSPP
PFNP15690806	8mm	3/8 BSPP
PFNP15691004	10mm	1/4 BSPP
PFNP15691006	10mm	3/8 BSPP
PFNP15691204	12mm	1/4 BSPP
PFNP15691206	12mm	3/8 BSPP



BULKHEAD UNION METRIC

Part No	Tube OD	Pipe Thread
PFN157406	6mm	-
PFN157408	8mm	-
PFN157410	10mm	-
PFN157412	12mm	-



PLUG

Part No	Tube OD	Pipe Thread
PFNP125202	-	1/8 BSPP
PFNP125204	-	1/4 BSPP
PFNP125206	-	3/8 BSPP



PNEUMATIC FITTINGS

CHECK VALVES

UNION CHECK VALVE F/F

Part No	Tube OD	Pipe Thread
PFCV02	-	1/8 BSPP
PFCV04	-	1/4 BSPP
PFCV06	-	3/8 BSPP
PFCV08	-	1/2 BSPP



UNION CHECK VALVE M/F

Part No	Pipe Thrd (M)	Pipe Thrd (F)
PFCVMF02	1/8 BSPT	1/8 BSPP
PFCVMF04	1/4 BSPT	1/4 BSPP
PFCVMF06	3/8 BSPT	3/8 BSPP
PFCVMF08	1/2 BSPT	1/2 BSPP



UNION CHECK VALVE F/F

Part No	Tube OD	Pipe Thread
PFNRV06	6mm	-
PFNRV08	8mm	-
PFNRV10	10mm	-
PFNRV12	12mm	-



SILENCERS

FLOW CONTROL SILENCER

Part No	Tube OD	Pipe Thread
PFFCS02	-	1/8 BSPP
PFFCS04	-	1/4 BSPP
PFFCS06	-	3/8 BSPP
PFFCS08	-	1/2 BSPP



SILENCER

Part No	Tube OD	Pipe Thread
PFNPS02	-	1/8 BSPP
PFNPS04	-	1/4 BSPP
PFNPS06	-	3/8 BSPP



SILENCER POLY

Part No	Tube OD	Pipe Thread
PFPS02	-	1/8 BSPP
PFPS04	-	1/4 BSPP
PFPS06	-	3/8 BSPP
PFPS08	-	1/2 BSPP



FLUIDFIT FITTINGS



*Fittings for Potable Water,
Drink Dispensers and Beverages.*



FLUIDFIT FITTINGS

STEM ADAPTOR

Part No	Tube OD	Pipe Thread
FF16590602	6mm	1/8 BSPT
FF16590604	6mm	1/4 BSPT
FF16590802	8mm	1/8 BSPT
FF16590804	8mm	1/4 BSPT
FF16590806	8mm	3/8 BSPT
FF16591004	10mm	1/4 BSPT
FF16591006	10mm	3/8 BSPT
FF16591206	12mm	3/8 BSPT
FF16591208	12mm	1/2 BSPT



FEMALE ADAPTOR

Part No	Tube OD	Pipe Thread
FF16660602	6mm	1/8 BSPP
FF16660804	8mm	1/4 BSPP
FF16661008	10mm	1/2 BSPP
FF16661206	12mm	3/8 BSPP
FF16661208	12mm	1/2 BSPP



STEM REDUCER

Part No	Tube OD	Tube OD
FF16670604	6mm	4mm
FF16670806	8mm	6mm
FF16671008	10mm	8mm



UNION STRAIGHT

Part No	Tube OD
FF166206	6mm
FF166208	8mm
FF166210	10mm
FF166212	12mm
FF166215	15mm



MALE ADAPTOR

Part No	Tube OD	Pipe Thread
FF16680602	6mm	1/8 BSPT
FF16680604	6mm	1/4 BSPT
FF16680802	8mm	1/8 BSPT
FF16680804	8mm	1/4 BSPT
FF16680806	8mm	3/8 BSPT
FF16681006	10mm	3/8 BSPT
FF16681206	12mm	3/8 BSPT
FF16681208	12mm	1/2 BSPT



REDUCING UNION

Part No	Tube OD	Tube OD
FF1662R0604	6mm	4mm
FF1662R0806	8mm	6mm
FF1662R1008	10mm	8mm
FF1662R1210	12mm	10mm



MALE ADAPTOR (PARALLEL)

Part No	Tube OD	Pipe Thread
FFP16680602	6mm	1/8 BSPP
FFP16680604	6mm	1/4 BSPP
FFP16680802	8mm	1/8 BSPP
FFP16680804	8mm	1/4 BSPP
FFP16680806	8mm	3/8 BSPP
FFP16681004	10mm	1/4 BSPP
FFP16681006	10mm	3/8 BSPP
FFP16681206	12mm	3/8 BSPP
FFP16681208	12mm	1/2 BSPP



UNION Y

Part No	Tube OD
FF166306	6mm
FF166308	8mm
FF166310	10mm
FF166312	12mm



UNION TEE

Part No	Tube OD
FF166406	6mm
FF166408	8mm
FF166410	10mm
FF166412	12mm



MALE ELBOW

Part No	Tube OD	Pipe Thread
FF16690602	6mm	1/8 BSPT
FF16690604	6mm	1/4 BSPT
FF16690804	8mm	1/4 BSPT
FF16690806	8mm	3/8 BSPT
FF16691004	10mm	1/4 BSPT
FF16691006	10mm	3/8 BSPT
FF16691206	12mm	3/8 BSPT
FF16691208	12mm	1/2 BSPT



UNION ELBOW

Part No	Tube OD
FF166506	6mm
FF166508	8mm
FF166510	10mm
FF166512	12mm



FLUIDFIT FITTINGS

BULKHEAD UNION

Part No	Tube OD
FF167406	6mm
FF167408	8mm
FF167410	10mm
FF167412	12mm



CHECK VALVE

Part No	Tube OD
FFCVM06	6mm
FFCVM08	8mm
FFCVM10	10mm
FFCVM12	12mm



LOCK CLIP

Part No	Tube OD
FFLCM06	6mm
FFLCM08	8mm
FFLCM10	10mm
FFLCM12	12mm



PLUG

Part No	Tube OD
FFPM06	6mm
FFPM08	8mm
FFPM10	10mm
FFPM12	12mm



SHUT-OFF VALVE

Part No	Tube OD
FFVSM06	6mm
FFVSM08	8mm
FFVSM10	10mm
FFVSM12	12mm



UNION STRAIGHT

Part No	Tube OD
FF176204	1/4
FF176206	3/8
FF176208	1/2



REDUCING UNION

Part No	Tube OD	Tube OD
FF1762R0504	5/16	1/4
FF1762R0604	3/8	1/4
FF1762R0605	3/8	5/16
FF1762R0806	1/2	3/8



UNION Y

Part No	Tube OD
FF176304	1/4
FF176306	3/8
FF176308	1/2



UNION TEE

Part No	Tube OD
FF176404	1/4
FF176406	3/8
FF176408	1/2



UNION ELBOW

Part No	Tube OD
FF176504	1/4
FF176506	3/8
FF176508	1/2



FEMALE ADAPTOR

Part No	Tube OD	Pipe Thread
FF17660408	1/4	1/2 BSPP
FF176605716F	5/16	7/16 UNF
FF17660608	3/8	1/2 BSPP
FF176606716F	3/8	7/16 UNF



STEM REDUCER

Part No	Tube OD	Tube OD
FF17670504	5/16	1/4
FF17670604	3/8	1/4
FF17670605	3/8	5/16
FF17670806	1/2	3/8



MALE ADAPTOR

Part No	Tube OD	Pipe Thread
FF17680402	1/4	1/8 BSPT
FF17680404	1/4	1/4 BSPT
FF17680606	3/8	3/8 BSPT
FF17680806	1/2	3/8 BSPT



FLUIDFIT FITTINGS

MALE ADAPTOR (PARALLEL)

Part No	Tube OD	Pipe Thread
FFP17680402	1/4	1/8 BSPP
FFP17680404	1/4	1/4 BSPP
FFP17680604	3/8	1/4 BSPP
FFP17680606	3/8	3/8 BSPP



PLUG

Part No	Tube OD
FFP04	1/4
FFP05	5/16
FFP06	3/8
FFP08	1/2



MALE ELBOW COMING SOON

Part No	Tube OD	Pipe Thread
FF17690402	1/4	1/8 BSPT
FF17690404	1/4	1/4 BSPT
FF17690604	3/8	1/4 BSPT
FF17690606	3/8	3/8 BSPT
FF17690806	1/2	3/8 BSPT
FF17690808	1/2	1/2 BSPT



SHUT-OFF VALVE

Part No	Tube OD
FFVS04	1/4
FFVS06	3/8
FFVS06	1/2



POLYETHYLENE TUBING

Black	Blue	Red	Natural
6mm	6mm	6mm	6mm
8mm	8mm	8mm	8mm
10mm	10mm	10mm	10mm
12mm	12mm	12mm	12mm
1/4	1/4	1/4	1/4
5/16	5/16	5/16	5/16
3/8			3/8
			1/2



BULKHEAD UNION

Part No	Tube OD
FF177404	1/4
FF177406	3/8
FF177408	1/2



CHECK VALVE

Part No	Tube OD
FFCV04	1/4
FFCV05	5/16
FFCV06	3/8
FFCV08	1/2



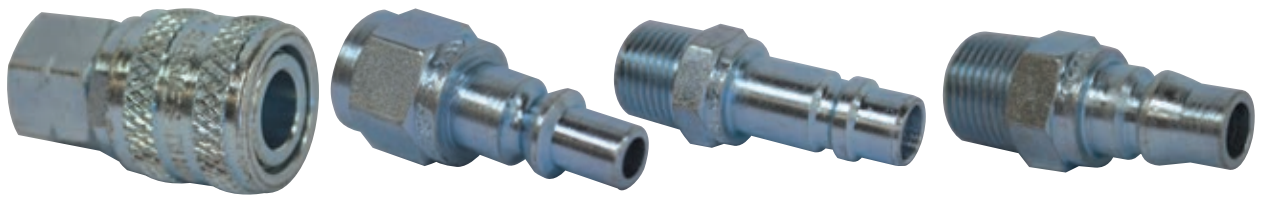
COIL LENGTHS AVAILABLE: 25m, 50m & 100m

LOCK CLIP

Part No	Tube OD
FFLC04	1/4
FFLC06	3/8
FFLC08	1/2



ARO FITTINGS



ARO COUPLERS

A210 ARO COUPLER

1/4" BSP Female Thread

Use with:

A2607, A2608, A2609, A2700, A3946, A3947 & A3948 ARO Tails
Steel Zinc Plated



A380 ARO COUPLER

3/8" BSP Female Thread

Use with:

A3807, A3808, A3809 & A3810 ARO Tails
Steel Nickel Plated



ARO A400 COUPLER

1/2" BSP Female Thread

Use with:

A300405, A300415 & A308005 ARO Tails
Steel Zinc Plated



A380 ARO COUPLER ADAPTORS

A3807 MALE CONNECTOR

1/4" BSPT Male Thread
Steel Zinc Plated



A3808 MALE CONNECTOR

3/8 BSPT Male Thread
Steel Zinc Plated



A3809 FEMALE CONNECTOR

3/8" BSPP Female Thread
Zinc Plated Steel



A3810 HOSE INSERT

3/8" Hose Barb – Coupler
Zinc Plated Steel



A210 ARO COUPLER ADAPTORS

A2607 MALE CONNECTOR

1/8" BSPT Male Thread
Steel Zinc Plated



A2608 MALE CONNECTOR

1/4" BSPT Male Thread
Steel Zinc Plated



A2609 FEMALE CONNECTOR

1/4" BSPP Female Thread
Steel Zinc Plated



A2700 MALE CONNECTOR

3/8 BSPT Male Thread
Steel Zinc Plated



A3946 HOSE INSERT

1/4" Hose Barb – Coupler
Steel Zinc Plated



A3947 HOSE INSERT

5/16" Hose Barb – Coupler
Steel Zinc Plated



A3948 HOSE INSERT

3/8" Hose Barb – Coupler
Steel Zinc Plated



A400 ARO COUPLER ADAPTORS

A308-005 HOSE INSERT

1/2" Hose Barb – Coupler
Steel Zinc Plated



A300-405 MALE CONNECTOR

1/2" BSPT Male Thread
Steel Zinc Plated



A300-415 FEMALE CONNECTOR

1/2" BSPP Female Thread
Steel Zinc Plated



TAPS & VALVES



TAPS & VALVES

BALL VALVE LEVER HANDLE F & F

Part No	Description
---------	-------------

TVBFLN08	1/4 Ball Valve Lever Handle F/F
TVBFLN10	3/8 Ball Valve Lever Handle F/F
TVBFLN15	1/2 Ball Valve Lever Handle F/F
TVBFLN20	3/4 Ball Valve Lever Handle F/F
TVBFLN25	1" Ball Valve Lever Handle F/F
TVBFLN32	1-1/4 Ball Valve Lever Handle F/F
TVBFLN40	1-1/2 Ball Valve Lever Handle F/F
TVBFLN50	2" Ball Valve Lever Handle F/F

Body Material: Brass Nickel Plated - Full Port

Threads: BSPP Pipe Thread

Handle Material: Stainless Steel Black Handle



BALL VALVE LEVER HANDLE M & F

Part No	Description
---------	-------------

TVBLMF08	1/4 Ball Valve Lever Handle M/F
TVBLMF10	3/8 Ball Valve Lever Handle M/F
TVBLMF15	1/2 Ball Valve Lever Handle M/F
TVBLMF20	3/4 Ball Valve Lever Handle M/F
TVBLMF25	1" Ball Valve Lever Handle M/F
TVBLMF32	1-1/4 Ball Valve Lever Handle M/F
TVBLMF40	1-1/2 Ball Valve Lever Handle M/F
TVBLMF50	2" Ball Valve Lever Handle M/F

Body Material: Brass Nickel Plated - Full Port

Threads: BSPP & BSPT Pipe Thread

Handle Material: Stainless Steel Red Handle



BALL VALVE TEE HANDLE F & F

Part No	Description
---------	-------------

TVBSFT08	1/4 Ball Valve Tee Handle F/F
TVBSFT10	3/8 Ball Valve Tee Handle F/F
TVBSFT12	1/2 Ball Valve Tee Handle F/F
TVBSFT20	3/4 Ball Valve Tee Handle F/F
TVBSFT25	1" Ball Valve Tee Handle F/F

Body Material: Brass Nickel Plated - Full Port

Threads: BSPP Pipe Thread

Handle: Red Painted Aluminium



BALL VALVE TEE HANDLE M & F

Part No	Description
---------	-------------

TVBTMF08	1/4 Ball Valve Tee Handle M/F
TVBTMF10	3/8 Ball Valve Tee Handle M/F
TVBTMF15	1/2 Ball Valve Tee Handle M/F
TVBTMF20	3/4 Ball Valve Tee Handle M/F
TVBTMF25	1" Ball Valve Tee Handle M/F

Body Material: Brass Nickel Plated - Full Port

Threads: BSPP & BSPT Pipe Thread

Handle: Red Painted Aluminium



TAPS & VALVES

BALL VALVE MINIATURE F & F

Part No	Description
TVBSF06	1/8 Ball Valve Mini F/F
TVBSF08	1/4 Ball Valve Mini F/F
TVBSF10	3/8 Ball Valve Mini F/F
TVBSF12	1/2 Ball Valve Mini F/F

Body Material: Brass Nickel Plated

Threads: BSPP Pipe Thread

Handle: Plastic



BALL VALVE MINIATURE M & F

Part No	Description
TVBSMF06	1/8 Ball Valve Mini M/F
TVBSMF08	1/4 Ball Valve Mini M/F
TVBSMF10	3/8 Ball Valve Mini M/F
TVBSMF12	1/2 Ball Valve Mini M/F

Body Material: Brass Nickel Plated

Threads: BSPP & BSPT Pipe Thread

Handle: Plastic



GATE VALVE - EZI FLO

Part No	Description
TVGBFK15	1/2 Gate Valve F/F
TVGBFK20	3/4 Gate Valve F/F
TVGBFK25	1" Gate Valve F/F
TVGBFK32	1-1/4 Gate Valve F/F
TVGBFK40	1-1/2 Gate Valve F/F

Body Material: Brass – Full Port

Threads: BSPP Pipe Thread

Handle: Cast Painted Blue



NEEDLE VALVE

Part No	Description
TVNV10402	1/8 Needle Valve F/F
TVNV10404	1/4 Needle Valve F/F
TVNV10406	3/8 Needle Valve F/F

Body Material: Brass

Threads: BSPP Pipe Thread

Handle: Brass



DRAIN COCK

Part No	Description
TVDC02	1/8 Drain Cock
TVDC04	1/4 Drain Cock
TVDC06	3/8 Drain Cock

Body Material: Brass

Threads: BSPT

Handle: Plated Steel



TAPS & VALVES

CHECK VALVE

Part No	Description
TVCVB15	VALVE SPRING CHECK BRASS 1/2" HEAVY DUTY
TVCVB20	VALVE SPRING CHECK BRASS 3/4" HEAVY DUTY
TVCVB25	VALVE SPRING CHECK BRASS 1" HEAVY DUTY
TVCVB32	VALVE SPRING CHECK BRASS 1-1/4 HEAVY DUTY
TVCVB40	VALVE SPRING CHECK BRASS 1-1/2 HEAVY DUTY
TVCVB50	VALVE SPRING CHECK BRASS 2" HEAVY DUTY



GAS APPROVED BALL VALVE LEVER HANDLE

Part No	Description
TVGBFL08	BALL VALVE AGA APPROVED L/HANDLE F/F 1/4" (GAS TIGHT)
TVGBFL10	BALL VALVE AGA APPROVED L/HANDLE F/F 3/8" (GAS TIGHT)
TVGBFL15	BALL VALVE AGA APPROVED L/HANDLE F/F 1/2" (GAS TIGHT)
TVGBFL20	BALL VALVE AGA APPROVED L/HANDLE F/F 3/4" (GAS TIGHT)
TVGBFL25	BALL VALVE AGA APPROVED L/HANDLE F/F 1" (GAS TIGHT)



GAS APPROVED BALL VALVE TEE HANDLE

Part No	Description
TVGBFT08	BALL VALVE AGA APPROVED T/HANDLE F-F 1/4"
TVGBFT10	BALL VALVE AGA APPROVED T/HANDLE F-F 3/8"
TVGBFT15	BALL VALVE AGA APPROVED T/HANDLE F-F 1/2"
TVGBFT20	BALL VALVE AGA APPROVED T/HANDLE F-F 3/4"



BRASS LEVER TAPS

Part No	Description
TV31E02	LEVER TAP FEMALE FEMALE 1/8 BSP
TV32E04	LEVER TAP FEMALE FEMALE 1/4 BSP

TV48E0202	LEVER TAP MALE FEMALE 1/8 BSP
TV49E0404	LEVER TAP MALE FEMALE 1/4 BSP



HOSE CLIPS & CLAMPS



HOSE CLIPS & CLAMPS

BREEZE MINIATURE

STAINLESS STEEL HOSE CLIPS

A lightweight, streamlined clamp generally used in small diameter applications such as air and fuel lines. Ideal for use in tight fitting or difficult to reach areas. This clamp creates high sealing pressure with only 10-15 1n. /lbs. of installation torque.

5/16" (7.9mm) band
1/4" (6.4mm) slotted hex head screw
400 Series All Stainless Steel



Part No	Clamping Range
MSS04	6 – 16mm
MSS06	11 – 20mm

BREEZE POWER – SEAL

STAINLESS STEEL HOSE CLIPS

A proven clip incorporating the 4 piece Quadra Lock Housing for superior strength and quality. Use in general clamping and automotive type applications.

1/2" (12.7mm) band
5/16" (7.9mm) slotted hex head screw
400 Series All Stainless Steel

Part No	Clamping Range
ASS08	13 – 23mm
ASS10	14 – 27mm
ASS12	17 – 32mm
ASS16	21 – 38mm
ASS20	21 – 44mm
ASS24	27 – 51mm
ASS28	33 – 57mm
ASS32	40 – 64mm
ASS36	46 – 70mm
ASS44	59 – 83mm
ASS48	65 – 89mm
ASS52	71 – 95mm
ASS56	78 – 102mm
ASS60	84 – 108mm
ASS64	91 – 114mm
ASS72	48 – 127mm
ASS80	64 – 140mm
ASS88	79 – 152mm
ASS96	92 – 165mm
ASS104	105 – 178mm



OETIKER CLIPS

A Oetiker Clips are designed for use with Rubber, PVC and Plastic Hoses where a strong and reliable clamping solution is required. To clamp, simply crimp the ears down using a Pincing Plier.

Material: Zinc Plated Steel

Part No	Clamping Range
HCOCZ0709	7 – 9mm
HCOCZ0911	9 – 11mm
HCOCZ1113	11 – 13mm
HCOCZ1315	13 – 15mm
HCOCZ1517	15 – 17mm
HCOCZ1518	15 – 18mm
HCOCZ1720	17 – 20mm
HCOCZ1922	19 – 22mm
HCOCZ2023	20 – 23mm
HCOCZ2225	22 – 25mm
HCOCZ2327	23 – 27mm
HCOCZ2528	25 – 28mm
HCOCZ2731	27 – 31mm
HCOCZ3134	31 – 34mm
HCOCZ3437	34 – 37mm
HCOCZ3740	37 – 40mm
HCOCZ4043	40 – 43mm
HCOCZ4346	43 – 46mm
# Also available in Stainless Steel	



STAINLESS STEEL PIPE

RETAINING CLIPS

A quality Pipe Retaining Clip for all your Pipe Clamping requirements where maximum corrosion protection is required.

Designed for securing Tubing and Hosing in a wide variety of industrial and commercial applications.

Band Width: 1/2"/12.7mm

Band Material: Stainless Steel Band/
Rubber Cushion

Fixing Hole: 1/4"/6.4mm

Sizes Available: 6, 10, 12, 16, 19, 25, 32, 38, 50, 65, 76mm (Tube O.D)



TUBING & HOSEING



TUBING & HOISING

SPIRAL TIE

Sizes Available: 6, 10, 12, 19, 25, 32, 38 & 50mm

Colour: Black (UV Resistant)

Coil Length: 15mtrs



COPPER TUBING

Sizes Available: 1/8, 3/16, 1/4, 5/16, 3/8 & 1/2" O.D

Coil Size: 15mtrs



BUNDY TUBING

Sizes Available: 3/16, 1/4, 5/16 & 3/8 O.D

Coil Size: 8mtrs



NYLON AIRBRAKE TUBING

Designed and manufactured specifically for use in Truck and Heavy Trailer Air Braking systems and secondary Air Systems. It can also be used in a wide range of other pneumatic applications.

Manufactured to meet SAE J844 and

DIN 74324 specifications

Coil Size: 100 mtrs



Metric	6mm	8mm	10mm	12mm	15mm	16mm
Black	✓	✓	✓	✓	✓	✓
Red		✓	✓	✓		
Blue		✓	✓	✓		

Imperial	1/8	5/32	3/16	1/4	5/16	3/8	1/2	5/8	3/4
Black	✓	✓	✓	✓	✓	✓	✓	✓	✓
Red				✓		✓	✓		
Blue				✓		✓	✓	✓	
Yellow				✓		✓			
Orange				✓		✓			
Green				✓		✓			

TUBING & HOSE

RUBBER AIRBRAKE HOSE

Designed specifically for use in Truck and Heavy Trailer Air Braking systems, and manufactured to meet S.A.E J1402 and D.O.T F.M.V.S. 106 specifications. Use with our 1492 Series Rubber Airbrake Hose Ends for a D.O.T approved connection. (see page 23)

Sizes Available: 3/8 & 1/2" O.D

Coil Size: 76.2mtrs



RUBBER FUEL HOSE – SAE 30R7

Sizes Available: 1/4, 5/16 & 3/18 I.D

Coil Size: 100mtrs or cut to length



HEATER HOSE

Standard black car heater hose for cars and light trucks. EPDM Tube and cover, high strength. Reinforcement meets SAE 20R3.

Sizes Available: 1/2", 5/8" & 3/4" ID



PVC AIRLINE

Excellent flexibility at low temperature. A hose for the transfer of air compressor hose. Blue smooth outer cover with a black inner wall. UV stabilised. Conforms to AS 2554 Class B.

Temperature: 0°C to 60°C

Working Pressure: 230 P.S.I

Size Available: 10MM ID

Coil Size: 100 mtrs or cut to length



POLYETHYLENE TUBING

Black	Blue	Red	Natural
6mm	6mm	6mm	6mm
8mm	8mm	8mm	8mm
10mm	10mm	10mm	10mm
12mm	12mm	12mm	12mm
1/4	1/4	1/4	1/4
5/16	5/16	5/16	5/16
3/8			3/8
			1/2



COIL LENGTHS AVAILABLE: 25m, 50m & 100m

AIRBRAKING ACCESSORIES

SUZI COILS

Suzi Coils are manufactured from 1/2" OD Nylon Airbrake Tubing and are supplied complete with 1/4" NPT male threaded ends and spring guard.



Available in:

3.0M Working Length Standard Tail Red & Blue Pair

3.7M Working Length Long Tail Red & Blue Pair

3.7M Suzi Coil to be used where Air Connections are elevated 1 metre above the chassis of Prime Mover and Semi-Trailer.

ERGONOMIC WASHDOWN GUN



ERGONOMIC WASHDOWN GUN



ERGONOMIC WASHDOWN GUN

ERGONOMIC DESIGN

The Ergonomic Gun was designed with anatomical considerations in mind. This means it shapes itself in your hand making it comfortable to use for extended periods of time. Constructed with Brass internal components with a shockproof plastic outer, it is built for professionals!!!

BALANCE & WEIGHT DISTRIBUTION

The Ergonomic Gun offers improved weight distribution to place less strain on the wrist and minimises operator fatigue

TRIGGER GUARD

The moulded Trigger Guard provides protection to the fingers from injury by sharp edges on equipment.

INSTANTANEOUS TRIGGER LOCK

The quick release trigger lock guarantees it can be immediately and easily shut off with just one hand.

REDUCED HEAT TRANSFER

The moulded plastic trigger and sealed gun minimises heat transfer, making the gun more comfortable to use, with no hot metal exposed.

QUALITY WORKMANSHIP

Made in Europe by true professionals for professional use!

SWIVEL INLET

The Gun comes standard with a 1/2" BSP swivel inlet for greater ease of use.

RATED PRESSURE

24 Bar

MAXIMUM FLOW RATE

60L/Min (Pressure Dependant)

MAXIMUM TEMPERATURE

90 Degrees Celsius

BONDLOCTM

FORMULAS THAT WORK

From Innovation...



...to application



ANAEROBIC RANGE



B222 **THREADLOCK**
Screwlock
LOW STRENGTH

B222 anaerobic adhesive is used for locking threads and preventing loosening. It seals out moisture to prevent corrosion. B222 is ideal for small screws, circuit board fixings etc.
10ml Bottles



B243 **THREADLOCK**
Nutlock
MEDIUM STRENGTH

B243 adhesive is an oil tolerant version of B242, for use on 'as received' parts. It locks threads, prevents loosening & also prevents corrosion by sealing out moisture.

10ml & 50ml Bottles



B270 **THREADLOCK**
Studlock
HIGH STRENGTH

B270 anaerobic adhesive is ideal for locking threads and preventing loosening. Use on all studs up to 1 inch diameter and coarse threaded bolts.

10ml & 50ml Bottles



B290 **TREADLOCKER**
Penetrator
MED/HIGH STRENGTH

B290 Wick In Penetrant is a Fast Cure anaerobic securing compound which is very low in viscosity, thus enabling the wicking action to search into the voids in assembled components and cure anaerobically in the absence of air on close fitting metal parts.
10ml Bottles & 50ml Bottles



B542 **HYDRAULIC SEAL**
Lock & Seal
MEDIUM STRENGTH

B542 Hydraulic Seal is used for all types of hydraulic connections, sealing against typical pressure line ratings up to 400 Bar. Ideal for use on valves and threaded couplings.

50ml Bottles



B569 **HYDRAULIC SEAL**
Lock & Seal
HIGH STRENGTH

B569 Hydraulic Seal is a high strength thixotropic liquid which cures Anaerobically to form a tough, high pressure seal on all types of threaded couplings used on low, medium and high pressure lines.

10ml & 50ml Bottles



B567 **PIPE SEAL**
Liquid PTFE
LOW PRESSURE

B567 is an easy break sealant and locking action product that gives an instant seal to low pressures. Fast fixture times are found on a range of materials such as copper, mild steel and other metals. Cold temperatures will slow the cure but not the instant seal.
65ml Tube



B577 **PIPE SEAL**
Liquid PTFE
HIGH PRESSURE

Pipeseal with PTFE. B577 is ideal for sealing pipes, pipe fittings and plugs. Providing an instant seal of 10 Bar and a pressure rating of 350 Bar when fully cured.

50ml Tube



B510 **INSTANT GASKET**
Gasket Sealant
MEDIUM STRENGTH

B510 is a fast set, Form-In-Place Gasket Maker for all types of metal parts, sealing and resisting temperatures up to 200°C.

65ml Tube



B515 **INSTANT GASKET**
Gasket Sealant
LOW STRENGTH

B515 Flange Sealant is a purple, smooth, thick paste. Easily applied B515 cures once confined between the parts to Form-In-Place a tough, flexible gasket. B515 gives an Instant low pressure seal.

65ml Tube



B603 **RETAINER**
Oil Tolerant
HIGH STRENGTH

Ideal for retaining bearings, brushes and keyways. Use to bond all cylindrical close fitting parts up to 0.15mm gap, especially where thorough degreasing is not possible.

10ml & 50ml Bottles



B641 **RETAINER**
Bearing Fit
HIGH PRESSURE

Recommended for use on parts that may need future dismantling. Gap fills to 0.2mm diametrically.

10ml & 50ml Bottles

CYANOACRYLATE RANGE



B401 **CYANOACRYLATE**
Ethyl
MEDIUM VISCOSITY

General purpose adhesive for bonding most materials including metals, plastics, woods, ceramics, rubbers, glass, card and leather.

3g, 10g and 20g



B406 **CYANOACRYLATE**
Ethyl
LOW VISCOSITY

General purpose adhesive for bonding most rubbers, metals and plastics, 'O' Rings and EPDM in seconds. Can be used with B770 primer for difficult plastics and Elastomers.

20g

SEALANT RANGE



RTVBNC **SILICONE SEALANTS**
RTV Neutral Cure
HIGH STRENGTH

BNC SILICONE is a single component, low modulus, oxime curing silicone sealant/adhesive.

Available: Grey, Translucent.



RTVGP **SILICONE SEALANT**
Acetic Cure
HIGH PERFORMANCE

RTV Acetic Cure Silicone is designed to make any size or shape gasket replacing cork, felt, rubber and asbestos gasket systems. Ideal for sealing and bonding between metal, glass, plastics, concrete, wood and vinyl. Also suitable for insulating and waterproofing electrical systems and resists temperatures up to 250 degrees celsius.

Available Colours: Clear, Black, White.



B5299 **HIGH TEMP RTV**
Acetic Cure
HIGH PERFORMANCE

B5299 RTV is a single component, high modulus, acetoxycuring silicone sealant that vulcanises at room temperature to provide a permanently flexible seal and bond.

Service temperature range: -40°C to 350°C.
Colour: Red

STRUCTURAL RANGE



B2001 **PUTTY STICKS**
Epoxy Putty

EMERGENCY REPAIR

Repairing, patching holes in pipes, stopping leaks and repairing porosity holes in castings. Moulds like clay and may be used to permanently patch dents, scratches, cuts, gouges and holes in all types of repairs to mouldings and injection type shapes.



B2002 **PUTTY STICKS**
Epoxy Putty

GENERAL PURPOSE

A hand kneadable, speciality epoxy putty that mixes in 1 minute for permanent repairs to Aluminium surfaces. The mixed epoxy turns from a silvery colour to "Alloy" upon curing and will not yellow upon exposure to UV light. After final cure it can be drilled, tapped, sawed, filed, sanded and painted.



B2003 **PLASTIC EPOXY**
Epoxy Stick

GENERAL PURPOSE

A hand kneadable, speciality epoxy putty that mixes in 1 minute for fast, permanent repairs to most plastic surfaces. The mixed epoxy turns from an aquamarine colour to a "fibreglass white" upon curing and will not yellow when exposed to UV light.



B2004 **COPPER EPOXY**
Epoxy Stick

GENERAL PURPOSE

A hand-mixable, fast-setting, copper-reinforced epoxy putty that quickly repairs pipes, tanks and vessels made of copper, brass, bronze and other non-ferrous metals. After mixing, it forms a polymer compound that is extremely tough and durable and offers exceptional adhesion.



B2006 **WOOD EPOXY**
Epoxy Stick

GENERAL PURPOSE

A hand-mixable, fast-setting, epoxy putty specially formulated to repair and rebuild wood quickly and easily. After mixing, it forms a polymer compound that cures to the same density as wood. After 60 minutes the application can be drilled, tapped, sawed, sanded, filed, painted, and stained.



B2007 **AQUA EPOXY**
Epoxy Stick

GENERAL PURPOSE

A hand-mixable, speciality epoxy putty for repairs to damp, wet areas and underwater surfaces. After mixing, it forms a polymer compound that may be applied underwater (either fresh or salt water) and will bond tenaciously to substrates such as fibreglass, concrete, ceramic, glass, metal, wood, and many plastics.

STRUCTURAL RANGE



B2012 5 MINUTE EPOXY Epoxy Resin

GENERAL PURPOSE

B2012 is a two part, rapid cold curing epoxy adhesive. It is suitable for bonding a wide range of surfaces, including steel, aluminium and galvanised iron. It reacts within five minutes to give a tough resilient bond.



B2025 UNDERWATER Epoxy Resin

GENERAL PURPOSE

B2025 is specially designed for a variety of applications and substrates including wet and dry bonding of Flexible PVC, Masonry, Fibreglass, Wood, Metal, Ceramics, Plastics and Glass. It is also suitable for use on composite type materials and can be used for bumper and side panel materials.



B2060 60 SECOND Epoxy Resin

GENERAL PURPOSE

A two-part, rapid cold curing epoxy adhesive. It is suitable for bonding a wide range of surfaces, including steel, aluminium and galvanised iron. It reacts within a minute to give a tough resilient bond.



B3294 PLASTIC WELD Acrylic

HIGH STRENGTH

A toughened structural adhesive formulated for bonding dissimilar substrates. The final adhesive bond is designed to be load bearing and resistant to weathering, humidity and wide temperature variations.

MAINTENANCE PRODUCTS



B771 ANTI-SEIZE Nickel

HIGH TEMPERATURE

B771 with its unique combination of properties, ensures rapid and easy assembly of thread parts; reduces torque, prevents seizing and galling; gives quick and easy breakout of threads, gaskets and packing even after long exposures to high temperature or corrosive conditions.



B772 ANTI-SEIZE Copper

HIGH TEMPERATURE

B772 Copper Antiseize is specially formulated for protection against seizure even in extreme service conditions. Copper Antiseize by its unique combination of properties, ensures rapid and easy assembly of thread parts.



B7767 SPRAY CAN Silicone Lubricant

GENERAL PURPOSE

B7767 Silicone Lubricant is ideal for more difficult release in the rubber, plastic and fibreglass industries. It helps prevent sticking to the moulds and cavities and also to the processing and fabrication equipment. It is also suitable as a lubricant for use on slipways and a polish/cleaner, particularly on plastic surfaces.

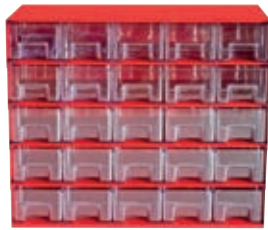


B7778 SPRAY CAN Cut & Tap Fluid

HIGH TEMPERATURE

Cut & Tap Fluid is a blend of oils which sprays to give a frothy, oily, relatively clear liquid. It may be used in all cutting tools and provides improved surface finish, reducing heat and friction. It contains additives which prevent pitting, galling and metal seizures. It can be used on all metals including stainless steel and titanium.

MISCELLANEOUS



MISCELLANEOUS

WHITE CEELON PTFE THREADSEAL TAPE

Fast clean leak proof sealing on all threaded joints.

- Lubricates
- Vibration resistant
- Non-seizing
- 12mm x 10mtrs

Part No: EGCT1210



YELLOW GAS THREADSEAL TAPE

Fast clean leak proof sealing on all threaded joints.

- Specially certified PTFE Thread Seal Tape for the Oil and Gas industry
- AGA approved
- 12mm x 10mtrs

Part No: EGCTG1210



MINI NYLON TUBE CUTTER

For use on nylon tubing up to 16mm (5/8)

Part No: TGITC



AIR DUSTER GUN

For cleaning machinery and equipment.

- 100mm nozzle
- 1/4" pipe thread inlet

Part No: AFAG4

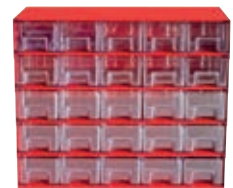


25 DRAWER CABINET

- Red powder Coated
- Plastic drawers with dividers

Unit dimensions: H: 330mm W:395mm D:160mm

Part No: EGC25



CABLE TIES

- Black
- UV Stabilized

Part No	Length	Width	Pack Qty
CT10025B	100mm	2.5mm	100
CT15035B	150mm	3.5mm	100
CT20035B	200mm	3.5mm	100
CT20047B	200mm	4.7mm	100
CT25047B	250mm	4.7mm	100
CT30035B	300mm	3.5mm	100
CT30047B	300mm	4.7mm	100
CT30075B	300mm	7.5mm	100
CT38047B	380mm	4.7mm	100
CT37075B	370mm	7.5mm	100
CT45075B	450mm	7.5mm	50
CT55090B	550mm	9.0mm	50



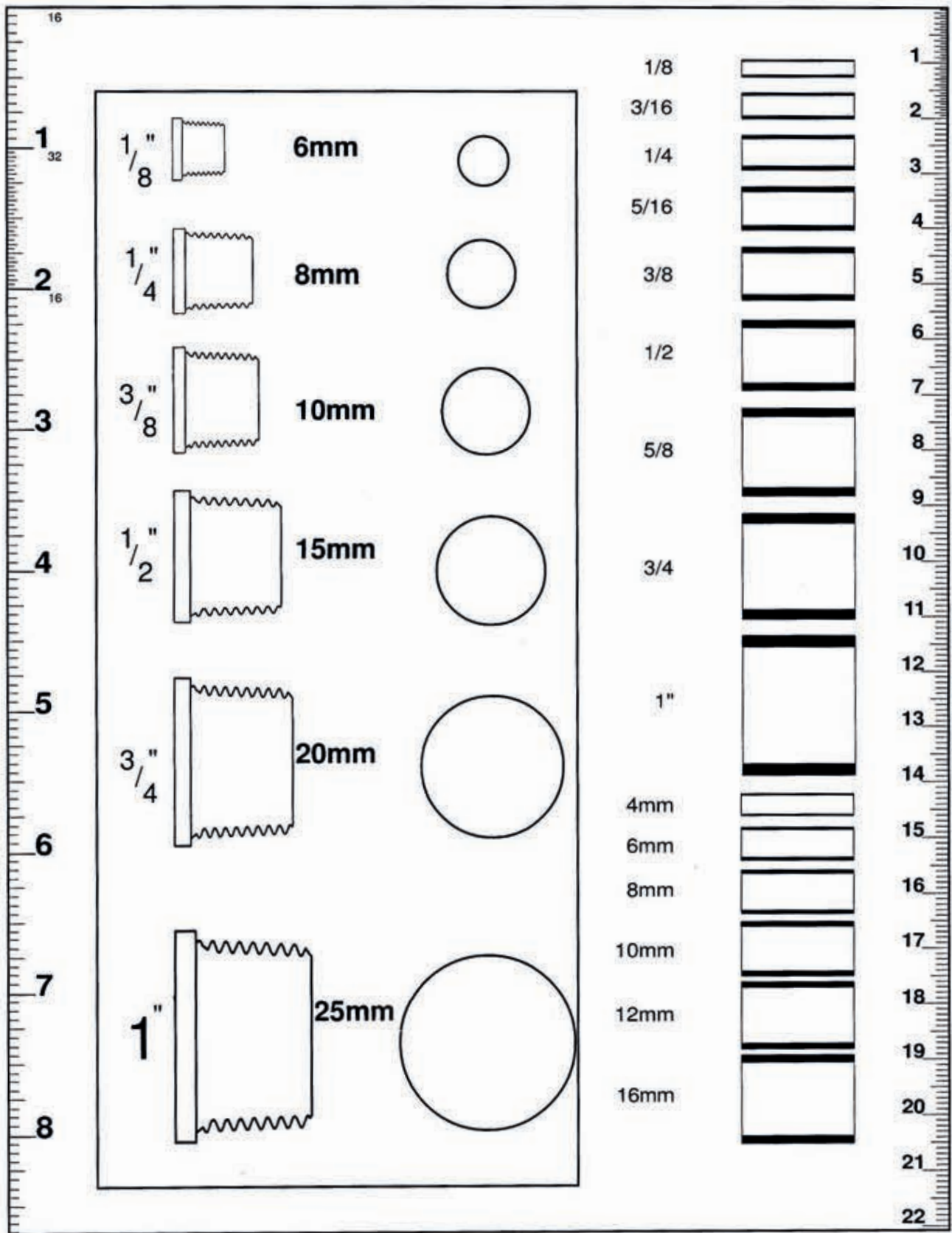
CONVERSION TABLES

PRESSURE		
PSI	kPa	BAR
100	689	6.89
200	1379	13.79
300	2068	20.68
400	2758	27.58
500	3447	34.47
600	4137	41.37
700	4826	48.26
800	5516	55.16
900	6205	62.05
1000	6895	68.95
1100	7584	75.84
1200	8274	82.74
1300	8963	89.63
1400	9653	96.53
1500	10342	103.4

TORQUE			
ftlb	Nm	Nm	ftlb
10	14	10	7
20	27	20	15
30	41	30	22
40	54	40	30
50	68	50	37
60	81	60	44
70	95	70	52
80	108	80	59
90	122	90	66
100	136	100	74
110	149	110	81
120	163	120	89
130	176	130	96
140	190	140	103
150	203	150	111
160	217	160	118
170	230	170	125
180	244	180	133
190	257	190	140
200	271	200	148
1 ftlb = 1.36 Nm		1 Nm = 0.738 ftlb	

THREADS USED ON BRASS FITTINGS								
Tube Size	1/8	3/16	1/4	5/16	3/8	1/2	5/8	3/4
45° Flare	5/16-24	3/8-24	7/16-20	1/2-20	5/8-18	3/4-16	7/8-14	1"1/16-14
	UNF	UNF	UNF	UNF	UNF	UNF	UNF	UN
Inverted Flare	5/16-28	3/8-24	7/16-24	1/2-20	5/8-18	3/4-18	7/8-18	1"1/16-14
	UN	UNF	UNS	UNF	UNF	UNS	UNS	UN
Compression	5/16-24	3/8-24	7/16-24	1/2-24	9/16-24	11/16-20	13/16-18	1"-18
	UNF	UNF	UNS	UNS	UNEF	UN	UN	UNS

PROFILES



PRODUCT BRANDS

conecta

CONECTA – Industrial Brass Fittings, Flare Fittings, Compression Fittings, Pipe Fittings, Airline Fittings, Needle Valves & Drain Cocks

BONDLOC
FORMULAS THAT WORK

BONDLOC – Adhesives & Sealants

T.A.C.

TAC – Push to Connect Airbrake Fittings D.O.T

API ADVANCED
PNEUMATIC
INDUSTRIES

API – Nickel Plated Pneumatic Push In Air Fittings and Silencers

CDC

CDC – Pneumatic One-Touch Push In Air Fittings, Check Valves and Banjo Flow Controllers

Fluidfit

FLUIDFIT – Fittings for Potable Water, Drink Dispensers and Beverages

Fairview

FAIRVIEW – NTA Airbrake Fittings D.O.T, NPT Pipe Fittings, Rubber Airbrake Hose Ends D.O.T, Road Ranger Fittings, Rubber Airbrake Hose J1402, Steel Bundy Tubing, Copper Tubing, Stainless Steel Pipe Retaining Clips

ARO

ARO – Air Fittings, Couplers & Adaptors

BREEZE

BREEZE – Stainless Steel Hose Clips & Clamps

FLOMAX

FLOMAX – Ball Valves, Lever Handle Ball Valves, Tee Handle Ball Valves, Miniature Ball Valves & Gate Valves

Esdan Plastics

ESDAN PLASTICS – Nylon Airbrake Tubing, Nylon 12 Tubing, Suzi Coils & PVC Hoses, Spiral Tie

POWAFLEX

POWAFLEX – Rubber & PVC Hoses

GasTight – GCA®

GAS TIGHT-GCA – AGA Approved Ball Valves



P +64 09 634 1443
F +64 09 634 2167

E sales@brassfit.co.nz
W www.brassfit.co.nz

